

## Information for Patients

# How to fit Fresnel prism to glasses

### What is a Fresnel prism?

A Fresnel prism is a thin transparent piece of plastic which is usually fitted to the inside of the lens of your glasses to correct double vision.

### Purchasing a Fresnel prism

Following discharge from the Eye Hospital you still require a Fresnel prism. A new Fresnel prism can be purchased over the internet. Search for **“Purchasing a Fresnel prism”**.

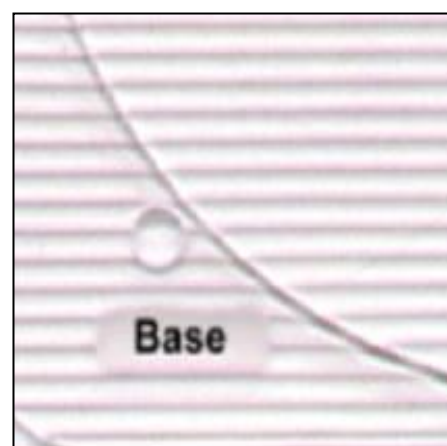
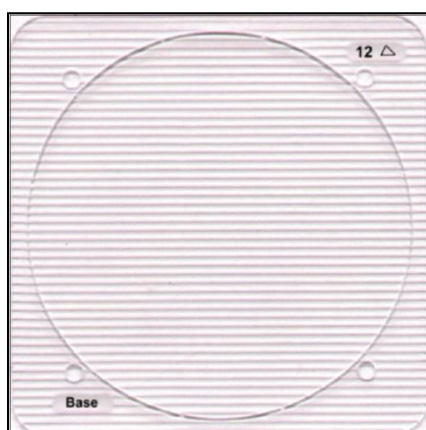
You require a \_\_\_\_\_ dioptr prism. Dioptr is the measure of strength of the Fresnel prism.

### Fitting your Fresnel prism

Fit the Fresnel onto the inside of the lens.

Your Fresnel Prism needs to be fitted base \_\_\_\_\_ onto the \_\_\_\_\_ lens.

- When your prism arrives it is attached to a border which tells you where the base is.

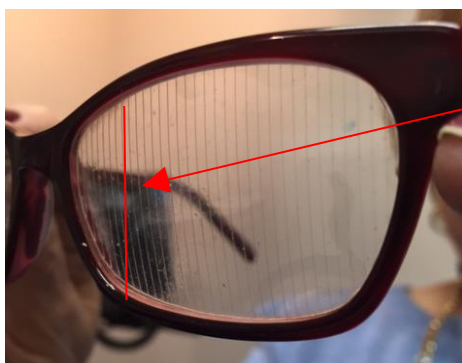


- Detect the smooth side of the Fresnel prism. This is the side that attaches to the lens.
- If your prism is to be fitted base out, place the base of the prism on the inside of the lens with the base near the arm of the glasses. The lines of the prism will run vertically.



**Base of prism will be here**

- If your prism is to be fitted base in, place the base of the prism on the inside of the lens with the base near the nose pads. The lines of the prism will run vertically.



**Base of prism will be here**

- If your prism is to be fitted base up, place the base of the prism on the inside of the lens with the base near the top rim of the lens. The lines of the prism will run horizontally.



**Base of prism will be here**

- If your prism is to be fitted base down, place the base of the prism on the inside of the lens with the base near the bottom rim of the lens. The lines of the prism will run horizontally.



**Base of prism will be here**

- Holding the prism in place against the inside of the lens, draw on the rough side of the prism around the shape of the lens with a non-permanent marker.
- Carefully cut the prism out using a small pair of scissors to fit the lens.

- Place a pool of water on the inside of the lens where the Fresnel prism is to be placed and push the smooth side of the Fresnel prism down onto the water.
- Squeeze out any excess water and air bubbles and dry with a damp cloth. Do not do this too often as the edges of the prism will curl upwards and it won't lie flat on your glasses.

## **Cleaning your Fresnel prism**

The Fresnel prism can be cleaned as you normally clean your glasses with a soft, dry cloth. You can use a soft toothbrush or nailbrush to gently remove dust from the ridges of the prism.

You can occasionally thoroughly clean your prism and glasses with water. You can remove your prism by placing your finger nail between the prism and the lens of your glasses and prising it off, then washing it with warm water and soap.

If you require any further information please contact us on:

 **(0161) 701 4882 Monday – Friday 8.00 am – 5.00 pm.**