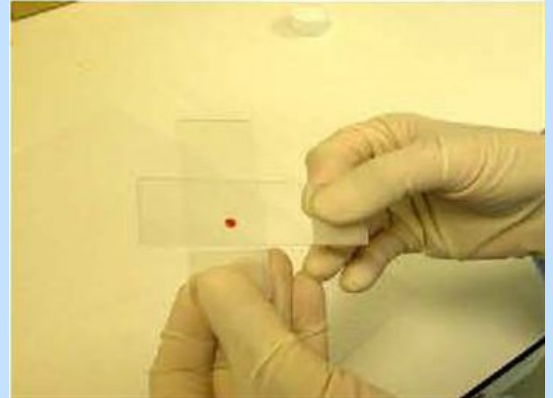


## Making spreads from fine needle aspiration

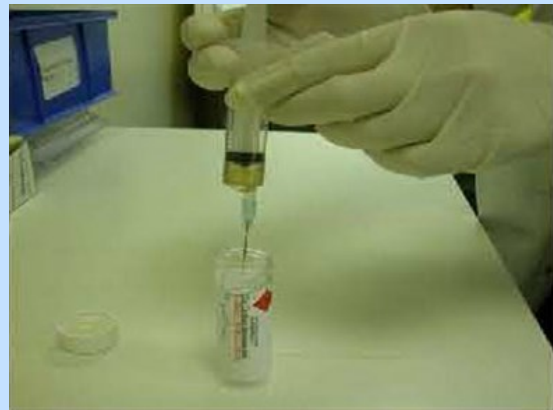
The ideal FNA sample is prepared as follows:

- Even monolayer spreads onto glass slides for air-dried 'direct smears'
- Needle to be rinsed in CytoRich Red preservative fluid (if available) or sterile saline
- Two passes are recommended for each case
- If Tuberculosis is suspected, please also send an aspirate to microbiology in a sterile container

**Step 1:** Having expelled a [small drop of the aspirate onto a glass slide](#), place a clean slide (spreader) above the drop and spread gently but swiftly. Leave to air dry.



**Step 2:** Rinse the remaining material from the needle into the CytoRich Red preservative fluid by repeated aspiration and expelling of the said CytoRich Red preservative fluid



**Step 3:** Label container containing CytoRich Red preservative fluid according to [specimen acceptance policy](#) and use a pencil to label slide



**Step 4:** Complete [request form](#), [package sample](#) and send to Cytology Department, Clinical Sciences Building 2



(Last reviewed 27th February 2018)