

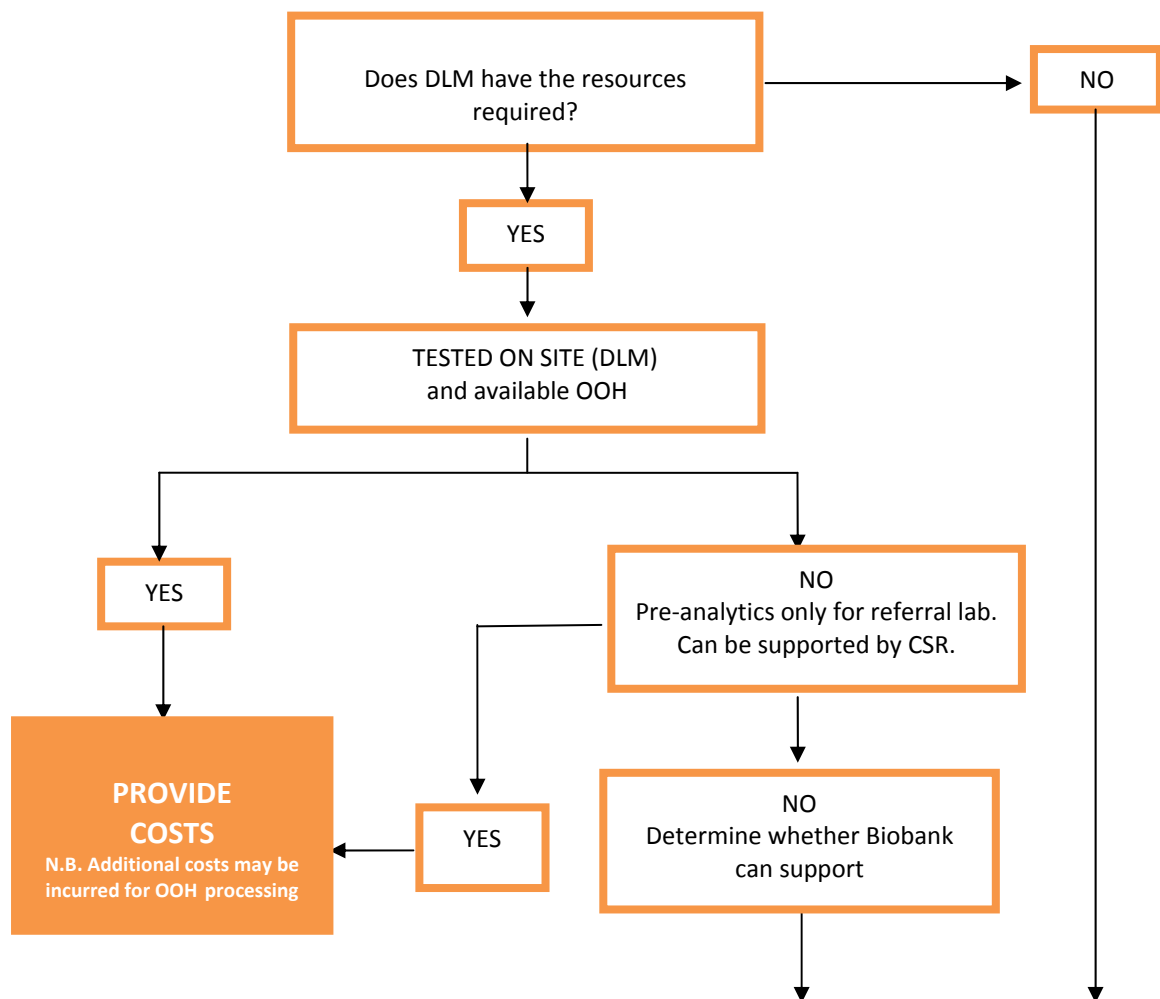


### Directorate of Laboratory Medicine (DLM)

Central Manchester University Hospitals NHS Foundation Trust  
Directorate of Laboratory Medicine  
Department: Operations  
Author: Babra Hanif  
Authorised by: Selton Smith

Copy no: electronic Q-pulse  
Version: v1 – OOH tests  
Q-Pulse Identifier:  
Date of issue: 09/02/20 15  
Page 1 of 1

## PROTOCOL FOR DLM RESEARCH / CLINICAL TRIAL Out of hours (OOH) TESTS (TO SUPPORT R-PEAK TATs)



### TRIAL COORDINATOR TO REFER BACK TO SPONSOR AND ADVISE THEM THAT:

- The Sponsor will need to:
  - Identify a Site
  - Advise the DLM how to process and where to send samples
  - Provide information re. transfer of samples between the two sites i.e. who will coordinate this / who will pay for this
  - Provide a Lab Manual