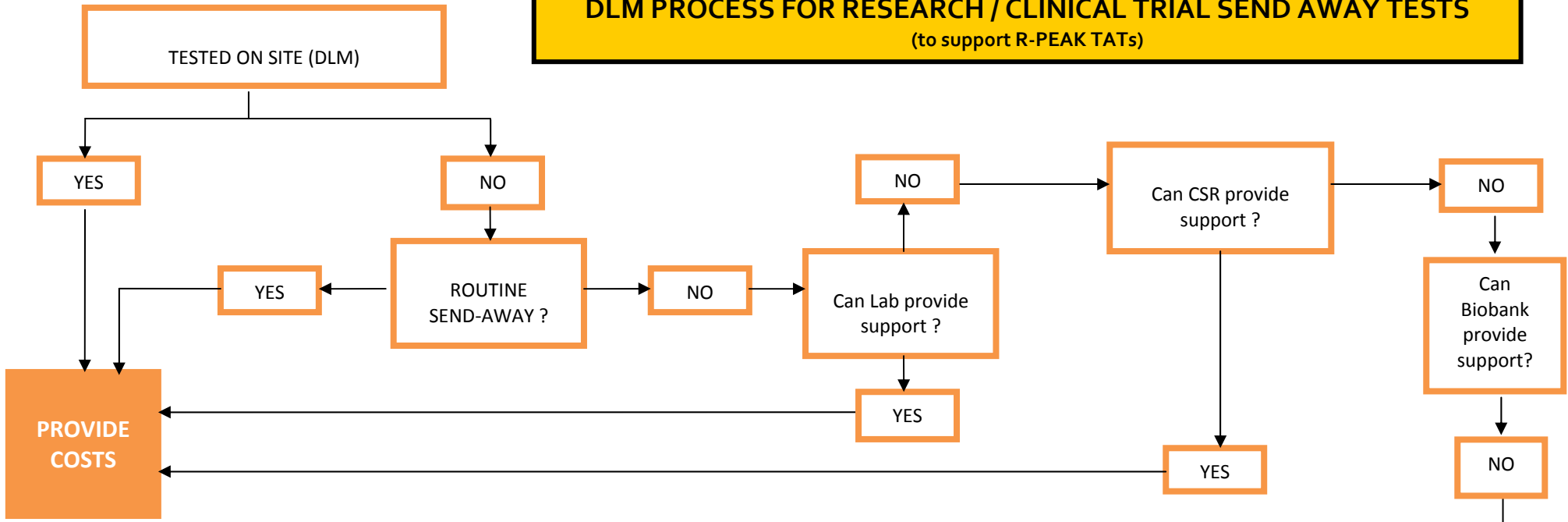




Central Manchester University Hospitals NHS Foundation Trust
Directorate of Laboratory Medicine
Department: Operations
Date of issue: 09/02/2015
Author: Babra Hanif

Copy no: electronic Q-pulse
Version: v1 Send Away Tests
Q-Pulse Identifier:
Authorised by: Selton Smith
Page 1 of 1

DLM PROCESS FOR RESEARCH / CLINICAL TRIAL SEND AWAY TESTS (to support R-PEAK TATs)



STUDY TRIAL COORDINATOR TO REFER BACK TO SPONSOR AND ADVISE THEM THAT:

- The Sponsor will need to:
 - Identify a Site
 - Advise the DLM how to process and where to send samples
 - Provide information re. transfer of samples between the two sites i.e. who will coordinate this / who will pay for this
 - Provide a Lab Manual