

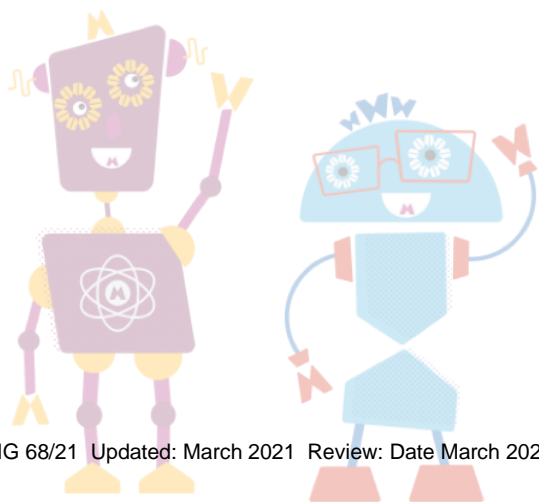
What is a Uroflow Study?

A Uroflow is a non-invasive investigation used to assess how you pass urine (wee). It measures the speed and flow of the urine by measuring how much urine is passed over what duration of time. It also picks up on patterns of the flow, for example if the flow stops and starts.

How is a Uroflow Study performed?

A Uroflow is performed by passing urine into a special toilet, that looks a little bit like a Commode. The urine collects in a jug underneath the toilet, which weighs the urine as it comes out. Your child will be admitted to the hospital for a period of approximately 2-3 hours and the study will be performed at least twice. Below are some tips to follow for when your child is admitted for a Uroflow:

- Prior to attending for a Uroflow Study please ensure that your child drinks as they usually would, it is important that they drink with breakfast/lunch and have a small drink on the way to the appointment.
- On arrival to the ward you will be introduced to the nurse who will be performing the study.
- Your child will be advised to drink until they feel the need to pass urine.
- The results of the study will be available straight away.
- You will be sent an outpatient appointment in the post to see the consultant or nurse and the results of the test will be discussed with you.
- Please see below an example of the Uroflow toilet:

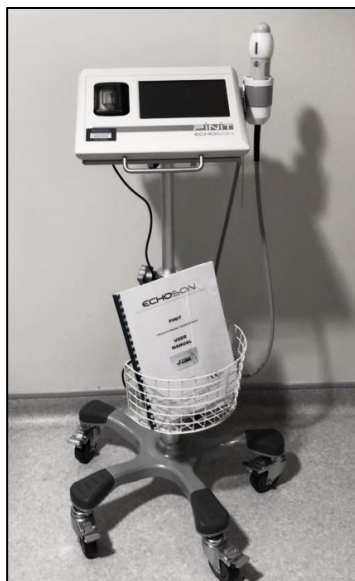


Bladder scan

When attending for a Uroflow Study your child will be required to have a bladder scan after urinating. The bladder scan checks to see how much urine has been left behind after urinating.

Before the scan we will place a paper towel on your child's lower tummy, lubricating gel will then be placed on to the child's tummy so that the special ultrasound probe can give a good picture of your child's bladder. The bladder scan only takes a few minutes to perform.

Please see below a picture of a bladder scanner:



EMG

Some of our patients will be required to have an EMG test performed, you will be aware if your child requires this test prior to the appointment. This test measures the electrical activity of the pelvic floor muscles. We use this information to diagnose any mechanistic cause of urinary retention or incontinence.

The test is performed by two sticky electrodes (similar to ECG stickers) being placed either side of your child's buttocks and one on their hip. Once your child feels the need to go for a wee we will connect the electrode wires to a small machine. We will then ask your child to wee on to the Uroflow machine (as described above) and will carry out a bladder scan after they have been to the toilet.

Your child will be required to carry out at least two EMG tests during their appointment and therefore will be required to stay for approximately 2-3 hours.

 In case of problems or advice please call:

Paediatric Urology Secretaries

Paediatric Urology Department Trafford General Hospital
(Monday-Thursday 08:00-16:00)

(0161) 701 1635

(0161) 746 2944