

CANDIDATES' ELECTION STATEMENTS

Election to the Council of Governors

Staff: Other Clinical

Please read carefully before casting your vote.



INFORMATION

Neither CES nor the Trust has corrected or edited the candidates' statements in any way. The views expressed on the following pages are those of the candidates only, and similarly the statements of fact and assertions expressed are made solely by the candidates and have not been validated by the Trust.

If you require these election statements in large print or in other languages, please contact Ciara Hutchinson at CES on 020 8889 9203, or via email at ciara.hutchinson@cesvotes.com

Sin-Wan Hung



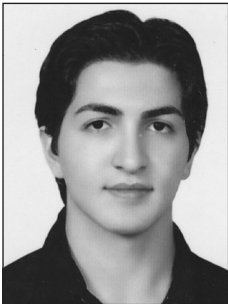
For my responsibility

Declaration of Interests:

Political Party: None

Financial or other interest in the Trust: None

Ali Parsi



I have a deep passion for our NHS Foundation Trust and the vital role it plays in providing exceptional healthcare services to our community. As a dedicated member, I have witnessed first-hand the impact our Trust has on the lives of patients, their families, and the wider community. I am motivated by the opportunity to actively contribute to the continuous improvement and development of our healthcare system.

One of the key reasons I aspire to be a governor is my belief in the power of effective communication and representation. I am committed to serving as a bridge between our Trust's members, including patients, carers, the public, stakeholders, and staff, and the Board of Directors. I will actively engage with members and listen to their perspectives, concerns, and ideas, ensuring that their voices are heard and their interests are represented.

I bring a diverse range of skills and experiences to this role. With a background in Diagnostics Laboratories I have developed strong analytical, problem-solving, and decision-making abilities. Additionally, my excellent interpersonal skills enable me to build relationships and work collaboratively with a wide range of individuals and groups. I am a good listener, open-minded, and empathetic, qualities that will enable me to understand the needs and aspirations of our diverse community.

I have a genuine interest in healthcare and a deep understanding of the challenges and opportunities we face in providing high-quality, accessible, and patient-centred care. I am dedicated to contributing to improvements in these areas within our Trust.

Declaration of Interests:

Political Party: None

Financial or other interest in the Trust: None

Lynne Robinson



Hi am very passionate about my role in making sure all patients have the best care and experience, and looked after very well with dignity and respect. Making sure we have happy staff supporting them in every way possible to make sure they are happy in role.supporting them with training to ensure they can carry out their roles correctly

Declaration of Interests:

Political Party: None

Financial or other interest in the Trust: None

Paul Schofield



I would be good at this post because. I have of knowledge to do with. so I would like it be concerted for this role I know it might come up challenges but this what Healthcare can be and it will be very exiting to try make a difference. to staff and patients lives

I look forward to hearing from you

Thank you for this opportunity.

Paul

Declaration of Interests:
Political Party: None
Financial or other interest in the Trust: None

Geraldine Thompson



I have had the privileged of serving as your elected Staff Governor for the past three years during which I have fulfilled my role with passion, energy, and drive. During the last three years, I have worked hard to bring concerns voiced from staff to the relevant Trust Officers and on their behalf, questioned and raised concerns ranging from the impact of the cost-of-living crisis on staff, staff car parking and health and well-being resources and support. Whilst raising the profile of our membership I was also elected in as Lead Governor, which meant I had to ensure a correct balance between that of delivering a staff voice, and the commitment to the Lead Governor role. I believe I navigated those extra commitment’s wholeheartedly and demonstrated this by significantly contributing toward Non-Exec and Chairman appraisal processes, sitting on interview panel’s for Non-Exec appointments, chairing nomination panels which inspect organisational process and seeks assurances around the appointment of MFT’s auditors, procurement and finance - you may also have seen me deliver the Annual Members Meeting update via film during COVID. I have been a strong and experienced voice advocating on behalf of the membership I represent and as we navigate the continuing period of uncertainty, with external social factors translating themselves into pressures on the NHS, affecting recovery and workforce, I hope that once again, you will allow me to continue being ‘your voice’ for a further term of office.

Declaration of Interests:
Political Party: None
Financial or other interest in the Trust: None

Geraldine Thompson: Attendance during current 2nd Term of Office (3-year period: September 2020 – current date)

2020		2021					2022					2023			Total
10 th Nov	24 th Nov	10 th Feb	30 th Mar	12 th May	21 st July	24 th Nov	9 th Feb	25 th May	13 th July	7 th Nov	14 th Dec	8 th Feb	2 nd May	12 th July	
✓	✓	✓	✓	✓	✓	✓	✓	✓	✓	✓	✓	✓	✓	✓	✓ = 15/15 attendances

Key = ✓ - Attended
 X – Did Not Attend



Manchester University
NHS Foundation Trust