



## Withington Community Diagnostic Centres



This explains about the Community Diagnostic Centre in Withington and what it offers.

### **What is Withington Community Diagnostic Centre or CDC?**



Withington Community Hospital is where the CDC is. It is being made bigger.

This means that a large extension is being built at the back of the Hospital.

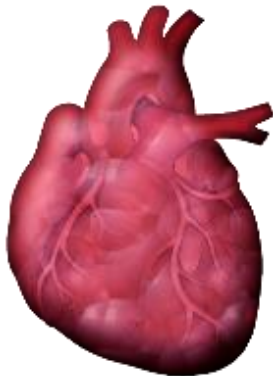
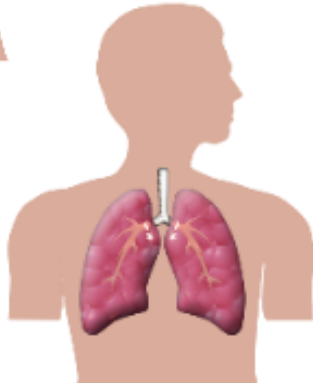
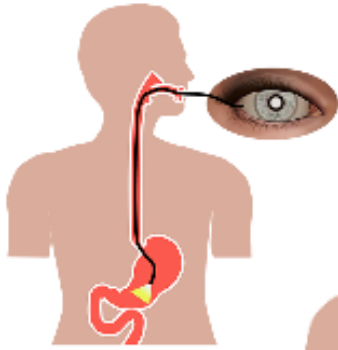
This space will be used for the CDC.



### **What do they do?**

The CDC helps you to get some health tests done quickly and near your home

## Before the appointment



They can do the following tests:

- Tests that look inside your mouth and gut using a small camera.
- Tests on your lungs and breathing.
- Tests on how well you sleep
- Tests on your heart to make sure it is healthy
- Tests that use some of your blood.
- Other tests to check that your body is okay.

### Why has this CDC been set up?

- This is to help you to get your health tests done quicker and near home.
- To make it easier for you if you face barriers in getting tests done.
- To find out about your illness earlier and treat you quickly, so you can get better faster.
- To make your waiting times for an appointment smaller



## How to get your test done at this centre?

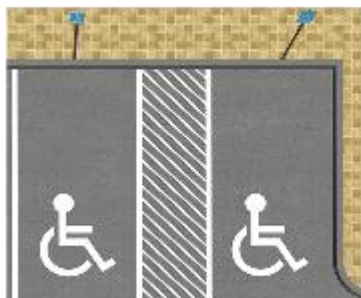
Your doctor or hospital will make a referral.

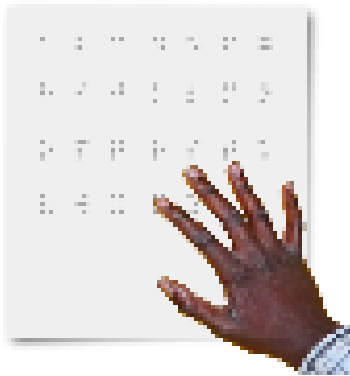
## How do they make things accessible for d/Deaf and disabled people?

There will be staff at the CDC called Care Navigators.

Care Navigators will provide support with access to the following:

- British Sign Language Interpreters.
- Lip speakers.
- Accessible parking at the site.
- Information about how to get there by bus, tram or taxi or if someone is taking you there.





- Provide information about the CDC in accessible formats.
- These formats include audio, Braille, British Sign Language, Easy Read and Large Print.
- Provide advice on who can come with you to your appointment.
- Arrange appointments at quieter times of the day and a quiet space to sit.

### **Who can I speak to about it?**

Contact the CDC on email  
[community.diagnostics@mft.nhs.uk](mailto:community.diagnostics@mft.nhs.uk)

A Care Navigator will get back to you and will explain all about the CDC.

The Care Navigator will also help to make sure your access needs are met.



This was made by Breakthrough UK

Phone: 0161 234 3950

Text: 07939 943383

Website:

[www.breakthrough-uk.co.uk](http://www.breakthrough-uk.co.uk)

Facebook: Breakthrough UK



made with  
photosymbols®