

## Division of Laboratory Medicine

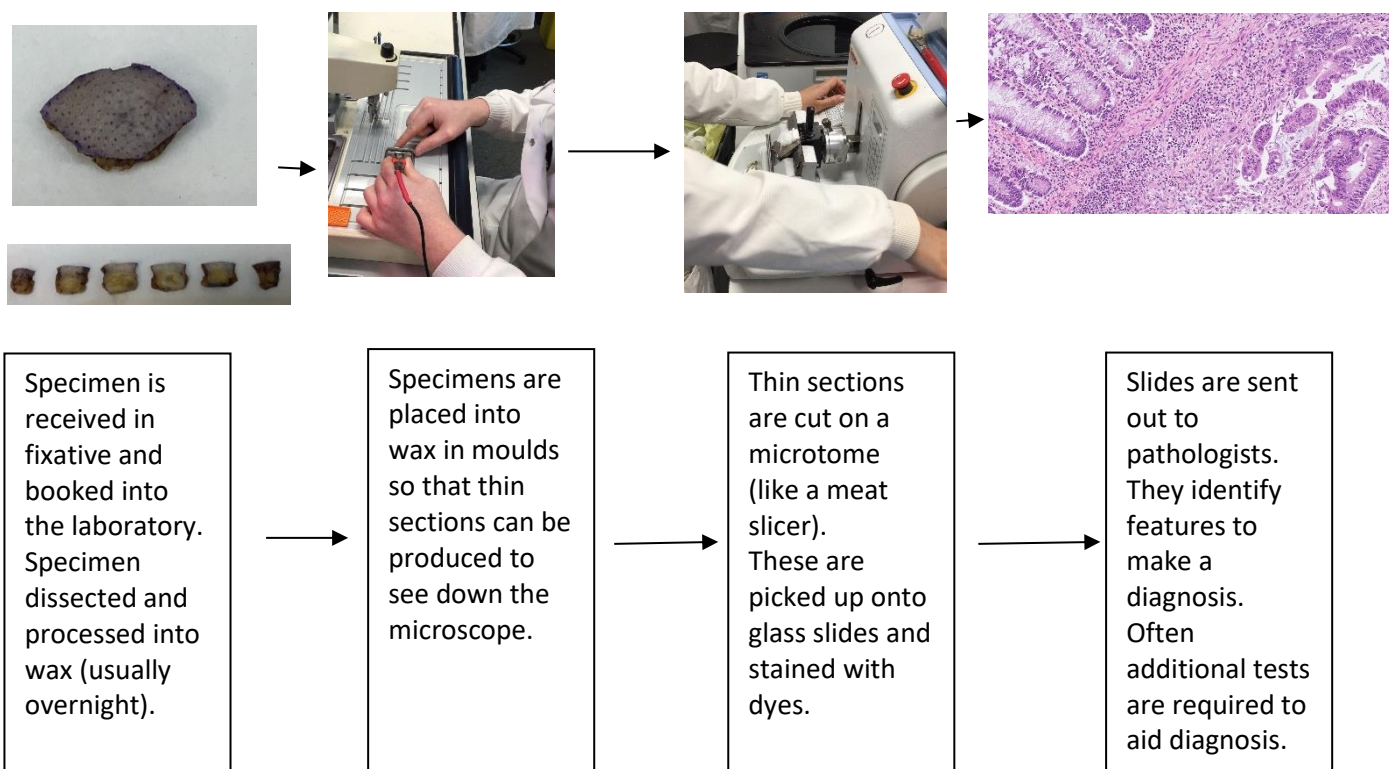
### Cellular Pathology

## Histopathology

### Clinical Information

Histopathology is the processing of tissue samples such as biopsies from a piece of tissue onto a glass microscope slide. There are several steps in this process which are mostly manual. The slides are stained using dyes and then reviewed by pathologists to give a diagnosis. There are a wide range of additional tests. These include different staining methods and molecular testing. Additional tests support providing an accurate diagnosis.

### Flow chart of specimen through histology laboratory



### Specimen information

**Turnaround time:** All specimens within 7 days. There will be exceptions for samples that require specialist testing. This may be extended for complex cases.

**Tissue retention:** Paraffin blocks are kept for 30 years and H&E slides are kept for 15 years before being disposed as part of patient record. This is in line with current RCPATH and HTA guidelines.

(Last updated August 2025)