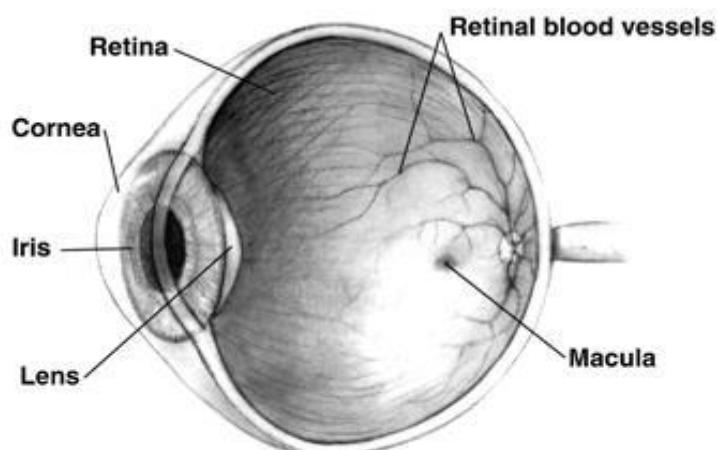


Information for Patients

Central Serous Retinopathy (CSR)

What is central serous retinopathy?

This diagram shows the different parts of the eye. Note the area for fine detail (the macula).



You have been diagnosed as having central serous retinopathy. This is a condition where a leakage of fluid causes a small blister to form under the retina close to the macula (most central part of the vision).

The retina is a light sensitive area at the back of the eye that helps to capture the image. The macula is the name given to a sensitive part of the retina that allows us to make out things clearly and see colours. Distortion of vision occurs because the retina is raised.

This condition usually affects men more than women and commonly between the ages of 20-45. The actual means or cause of this condition is not fully understood.

What are the signs and symptoms?

You will normally have experienced a sudden painless loss of vision with blurring and distortion in the central part of your vision. You may become longsighted or more longsighted than before and will notice that you have difficulty reading things close to you or of small print.

Is there anything that can be done?

In most cases the condition will resolve on its own, without treatment, within one to six months and vision will return to normal. Very occasionally, laser treatment may be recommended to seal the leakage, but treatment is only advised if the condition does not settle on its own.

The doctor may recommend that you undergo a special photographic dye test called fluorescein angiography. This is normally done if the condition fails to get better on its own and following laser treatment.

Once your condition has improved you will be discharged from the care of the hospital. If you experience further signs and symptoms you should seek urgent advice through your GP or Optician.

Are there any complications?

In some cases the swelling leaves a scar which may affect your sight. This condition may re-occur. These complications will be discussed with you by the ophthalmologist.

If you require any further information please contact the Emergency Eye Department on (0161) 276 5597 8:00am – 9:00 pm every day.