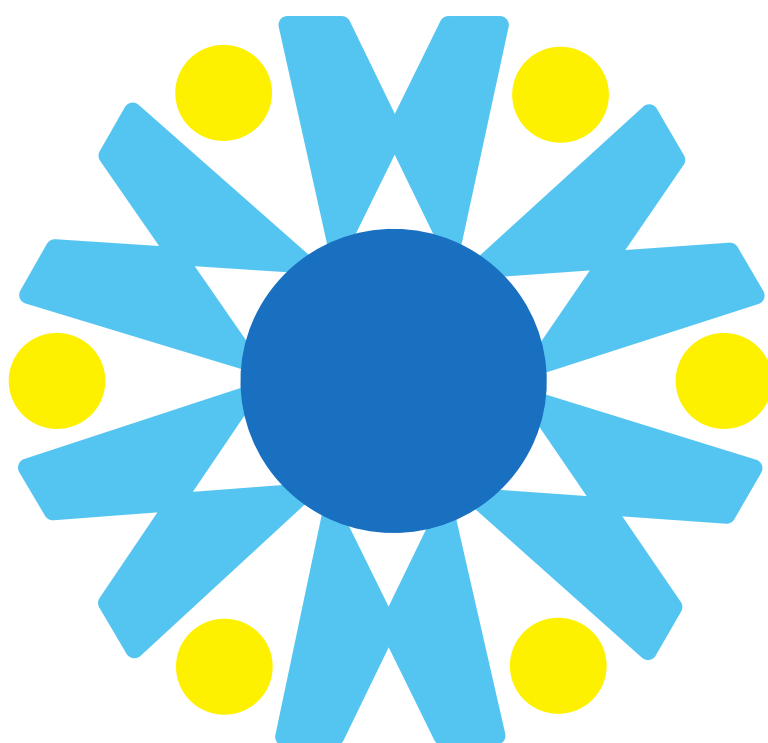




Manchester University
NHS Foundation Trust

Manchester Royal Eye Hospital

Referrals Guide for Primary Care Optometry



Welcome

The following information has been compiled by the Manchester Royal Eye Hospital (MREH), by clinicians, to guide you when referring to MREH services and particularly to help identify the department or service required for certain clinical presentations.

This document has been designed as a digital document to allow for quick updates when required. If you decide to download it, take note of the version and date information in the footer and then look out for newer versions to make sure you have the most up to date version. It will be available on the MREH website here:

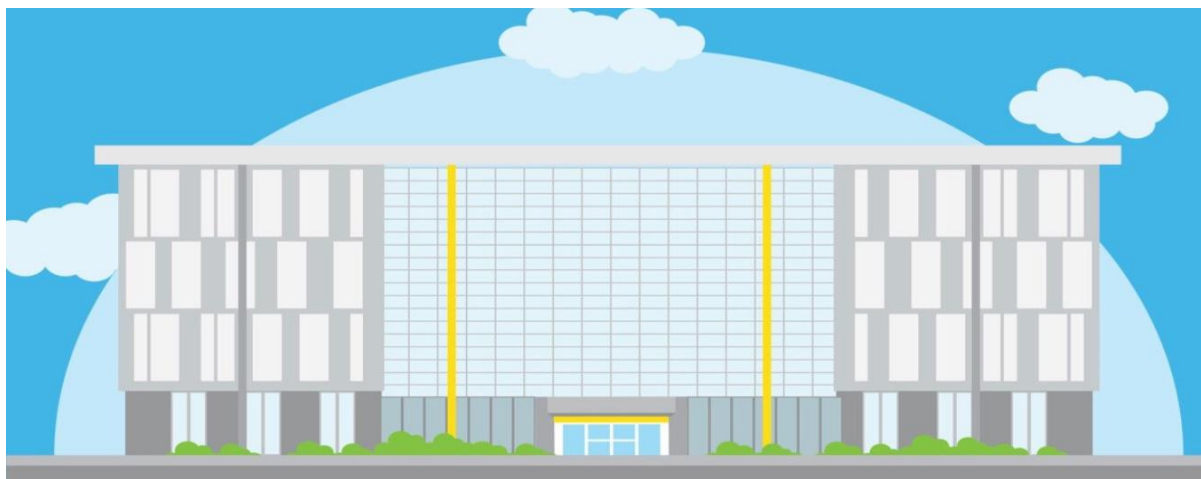
<https://mft.nhs.uk/royal-eye/about-us/primary-care-optometrists/>

This document makes reference to Opera, however MREH does not administer the Opera referral system, this system has been commissioned to be used in primary care optometry by NHS England and overseen by Primary Eyecare Services. Should you experience difficulties, you should contact the Opera helpdesk.

This information is aimed at optometrists when MREH is selected as the provider the patient is being referred to. We are a large specialist hospital, where our clinicians work within sub-specialist teams to meet the needs of our patients; we organise our referral pathways to reflect this. Please do not apply the guidance here to other providers you may refer patients to, as they are likely to have different processes in place. The Opera system will offer you a list of providers based on the patient's CCG of responsibility.

We welcome any feedback you have regarding this document:

<https://www.surveymonkey.co.uk/r/BCJTH23>

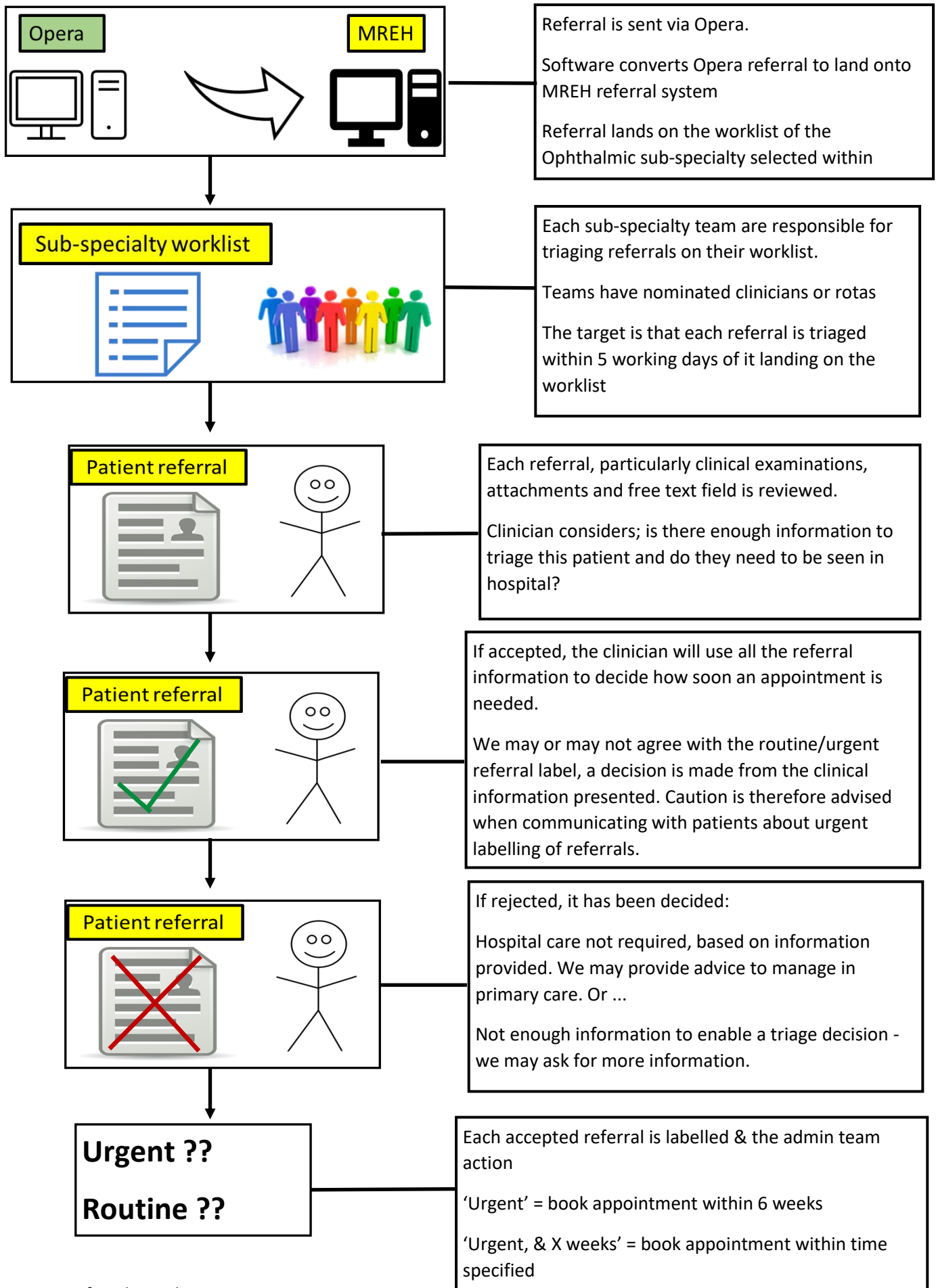


How are referrals processed?

After you send a referral from Opera, it is converted to land within the MREH electronic referral service (eRS). MREH clinicians log into the eRS digital system to triage referrals; to accept or reject them and decide a suitable timeframe for an appointment. The diagram on the next page outlines this process.

This triage process excludes referrals to our quick access emergency services; EED and EMAC. These services have a different process recognising the emergency pathway required.

This process also excludes adult cataract referrals. The enhanced referral scheme in place across Greater Manchester requires adult cataract referrals to meet a certain threshold for referral and therefore do not require a clinical triage. These referrals are received by the Cataract Centre then allocated an appointment based on order of receipt.



Patient factors

By highlighting specific information about the patient in the 'Patient Factors' section, we can make adjustments for the patient before and/or during their appointment.

Eg. By recording that a child has an autism diagnosis, we could:

- Find a side room they can wait in
- Book them as the first patient of the clinic
- Send a storyboard out to help them prepare

By highlighting key information, we can also contact the patient, parent or carer.

Please make use of free text field at the end, perhaps observations you make or information you are told; it is extremely valuable and will improve the patient's experience.

Referral information, images, scans

The information provided with referrals enables MREH clinicians to make a decision of how to proceed in the care of a patient; so please include all clinical details requested.

We are very grateful for you enclosing visual field and imaging attachments where possible, as this helps us triage referrals effectively and is useful when looking for repeatability of results.

General health and medications

Please do seek patient consent to include the summary care record with referrals where possible. This ensures the clinician triaging or reviewing the patient has additional clinical information. If this isn't possible, we are grateful for you providing as much relevant information as you have in your Opera referral.

Multiple clinical presentations

If a patient presents with more than one complaint, which would fall under different sub-specialties, please refer each complaint separately to the sub-specialties the patient requires. This will allow the patient to access care from each sub-specialty in the most appropriate timeframe.

Guidance for patients already under the care of MREH

If a patient already under the care of MREH experiences a change or deterioration in the condition MREH are treating/managing, it is helpful for this information to be escalated to the team caring for the patient so they can review the patient and act if needed. You can do this by documenting your clinical observations demonstrating change/ deterioration plus examinations undertaken then:

Send via your nhs.net email account (to ensure a secure exchange) - mark the email *FAO consultant and/or clinical team responsible for patient* and send to mft.mreh.referrals@nhs.net

If you identify that a patient already under the care of MREH needs to be seen for a different/new presenting complaint by a different sub-specialty, you need to refer the patient to the sub-speciality they now need, as a new referral on Opera.

Please do not assume this will be done internally; if they have not been seen recently at the hospital the different/new presenting complaint will not have been identified.

Emergency services

Our emergency services are designed to see and treat patients who need emergency care for a clinical presentation requiring eye or sight saving intervention.

These services are organised to enable quick access to care for patients who need it, these patients do not follow the clinical triage process set out on page four.

Eye Emergency Department

If a patient needs to be seen due to an eye or sight threatening emergency, they can be referred to our Emergency Eye Department (EED), please follow our advice below.

EED opening times - 7 days a week 08:00 – 20:00

Patients should be sent to MREH EED in the two scenarios below:

When to send patient to EED	Process for primary care optometrists to follow
<p>1. Where the presenting complaint falls under the red section of the ‘REFERRAL GUIDELINES FOR OCULAR PATHOLOGY IN GREATER MANCHESTER’ document located on the GM LOCs website within the Emergency eye referrals section for each CCG area</p>	<p>Where the presenting complaint falls into the red category of the guidelines table, you should send the patient straight to EED.</p> <p>You do not need to call the department.</p> <p>If you have referred the patient through on Opera, you should state in the free text field <i>‘I have sent the patient straight to EED.’</i></p> <p>MREH will not contact patients referred through on Opera, it is your responsibility to make sure they attend. You should explain to the patient why they must attend straight away and give them a referral letter or a print-out of the clinical observations you have put into Opera.</p>
OR	
<p>2. After the patient case has been discussed with a clinician in the department (this includes via Opera). This is for cases where the presenting complaint does not fall into the red emergency section but you suspect the patient may still need some form of emergency care.</p>	<p>Optometrists can use the Opera EED option to seek advice on a patient, the EED team are able to respond with written advice to you via Opera.</p> <p>If seeking advice – in the free text field please state <i>‘I am seeking advice on what to do with this patient’</i> then wait for feedback via Opera.</p> <p>EED will send feedback directly on Opera, it is the responsibility of the optometrist to then follow up as instructed with the patient, which may include sending the patient to EED. The EED team will not contact the patient.</p> <p>There is more detail on using the EED option in Opera below.</p> <p>You will only receive feedback on Opera Mon-Fri 9:00-17:00. Outside these hours you can call the department on 0161 701 0249. If the department advise you to send the patient to EED, send a referral on Opera and note that you have already contacted EED by phone. Please remember EED will not contact the patient, you must tell them to attend EED.</p>

Community Urgent Eyecare Services (CUES)

If you are not providing CUES in your practice, you should consider whether the CUES service could meet your patient's needs, e.g. does this patient meet CUES suitability criteria? If so, please refer the patient onto CUES. You can use the information on the [Primary Eyecare Service's webpage to help your patient find a suitable optometrist](#) .

Please be aware that patients arriving in our department undergo a clinical triage and in suitable cases we are streaming away from EED and directing patients to CUES.

If you are a CUES practice and do not have capacity to see a patient needing a CUES appointment, your practice is responsible for finding the patient an appointment from the local network of CUES practices.

Referring to MREH EED on Opera

1. When the patient needs to access emergency care straight away:

Patients with presentations which fall into the red section of the '[REFERRAL GUIDELINES FOR OCULAR PATHOLOGY IN GREATER MANCHESTER](#)' on the GM LOCs website **should be sent straight to EED** with a letter or a print out from Opera, you do not need to phone EED to inform the team you are sending someone to them.

In such cases MREH recognise, practices using Opera, will have used the system to refer to EED to evidence the end point the patient has been sent to. Please make it clear on referrals, at the top of the free text field that '*the patient has been sent straight to EED*'. **It is the responsibility of the referring optometrist to ensure the patient goes straight to the department, the department do not contact patients who are referred to EED on Opera.**

2. When the patient may need to attend EED but guidance is needed

Primary care optometrists can use the MREH EED option on Opera to get advice on a patient who may need care in EED. Please make it clear on referrals, at the top of the free text field that '*I am seeking advice to manage a patient.*'

The query will be received into MREH's EED electronic referral service (eRS) with advice sent back to Opera Monday-Friday 9:00-17:00. Outside these hours you can phone the department for advice on a patient - 0161 701 0249.

If the team advise you to send the patient to EED, make a note on the Opera referral that you have spoken to MREH EED.

All queries are answered as quickly as possible. If asking for advice, please wait for a response before sending the patient to us. The patient can leave the practice while seeking an opinion from EED, but tell the patient you or your practice will contact them once a decision has been made by the hospital and before they attend EED. If EED advise a patient should attend the department, **it is the referring optometrist's responsibility to inform the patient**; you or your practice colleagues should regularly check for a response. **MREH EED will not contact the patient.**

Emergency Macular (EMAC)

Guiding principle for referral - patients who you feel may require urgent treatment with intravitreal injection therapy. E.g.

- Wet Age-related Macular Degeneration
- Retinal vein occlusion
- Myopic choroidal neovascularisation

This does not include conditions needing surgical management, eg. Macular hole. They should be referred to the Vitreoretinal service via Opera.

The EMAC service enables patients to have scans and images taken quickly to make a diagnosis and initiate a treatment plan.

Artery occlusion of recent onset (within 24 hours) -send to Emergency Eye Department. If not recent onset -send to GP the same day & routine Medical Retina.

For guidance, we have highlighted examples of macular presentations which do not need to be referred to EMAC but to other ophthalmic services instead:

Clinical presentation	Refer to
Central/Branch Retinal Vein Occlusion without macula oedema	Medical Retina
Diabetic Macular Oedema	
Central Serous Retinopathy	
Vitreomacular Traction	Vitreoretinal
Macular Hole	
Epiretinal membrane	

EMAC referral pathway

Call the EMAC team while the patient is still with you to organise an urgent appointment for them. Have their DOB, NHS number, best contact number and address to hand.

EMAC team 0161 701 3419

Advise the patient that you have organised an urgent referral as you consider the patient to have a sight threatening pathology and best outcomes are often obtained by prompt treatment.

We have developed a hand-out for the patient to take away; please complete the time and date of the appointment arranged and give to the patient. Copies have been circulated, but you can also contact katie.james@mft.nhs.uk if you would like a copy emailing to you.

Please follow this with a referral via Opera, selecting the EMAC option. If you have access to OCT, attach the screenshot of the OCT and reference image of the area you are concerned about. This will help us to give you feedback once we have reviewed the patient.

For Optometrists without access to Opera, please follow all steps above so the patient has an appointment, then refer patients by completing the below form and send via your nhs.net email account. Fillable form available on GMLOCs website.



EMAC referral form -
May 2022.pdf

Email: mft.macular@nhs.net - *only secure if sent from an nhs.net account*

Out of hours arrangement

Refer via Opera selecting the EMAC option. Ensure the referral clearly states the best telephone number for the patient to enable us to contact them.

Explain to the patient they will receive a phone call from MREH to book an urgent appointment as you consider the patient to have sight threatening pathology and best outcomes are often obtained by prompt treatment. Please tell them to expect a phone within the EMAC office hours.

Please give them a blank handout, so they can fill in the time and date details, this will also direct them to the clinic within MREH.

Please note our EMAC office hours are Monday – Friday 08:30-16:30

Sub Speciality services

The following information is to help identify which MREH service to refer certain clinical presentations to. Referral to these services will enact a clinical triage process which is described on page four of this document.

Adult Diplopia/Squint	
Conditions treated	Ocular motility disorders, cranial nerve disorders, squint, strabismus, double vision diplopia, binocular vision disorders.
Procedures performed	Restoration of binocular vision or ocular alignment which may include, prisms, bangerter foils, occlusion, Strabismus surgery, botulimum toxin injections, exercises, manipulation of lenses.
Examinations or information required	Up to date optometric assessment report
Key information for referrer	If urgent, acute onset please send to Emergency Eye Department, with a letter documenting the patients clinical presentation.
Ages accepted	18 years and over
Appointment types available to MREH clinicians	Urgent Routine

Cataract	
Conditions treated	Cataract, lens opacity, lenticular opacity, nuclear cataract.
Procedures performed	<p>Cataract surgery under local and general anaesthetic.</p> <p>All patients undergo an initial assessment at the Cataract Centre at Withington Community Hospital. Local anaesthetic cases are undertaken here.</p> <p>Sedation or general anaesthetic cases are undertaken at the main MREH site on Oxford Road.</p>
Examinations or information required	<p>Indicate if patient has cataract related symptoms that affect their ability to function day to day in a significant way (blur, glare or night-time halos).</p> <p>Up to date optometric assessment report, including refraction and best corrected visual acuity measurements.</p> <p>Indicate if the patient has chronic confusion, learning disabilities or dementia</p>
Key information for referrer	<p>Referrals must align to the Greater Manchester effective use of resources policy.</p> <p>Referrals must adhere to local commissioned pathways such as enhanced cataract referral.</p> <p>Patient should have been counselled on the risks and benefits of cataract surgery and then be willing to undergo surgery if offered.</p> <p>This service does not provide YAG laser, they must be sent via Opera by selecting the dedicated YAG laser pathway, using a GOS18 referral.</p>
Ages accepted	<p>18 years and over</p> <p>Patients younger than 18 years – see paediatric section</p>
Appointment types available to MREH clinicians	<p>Urgent</p> <p>Routine</p>

Cornea/External Eye Disease	
Conditions treated	Keratoconus, Corneal Dystrophy, Fuchs Endothelial Dystrophy, Corneal Transplant, Corneal Graft, Corneal Ectasia, Peripheral Ulcerative Keratitis, Mucous Membrane Pemphigoid, Pterygium, iris lesions, conjunctival lesions, ocular surface issues
Examinations or information required	Up to date optometric report. Refraction information is required. Any previous refractive data is very helpful to assess change in keratoectasia.
Key information for referrer	
Ages accepted	18 years and over Patients younger than 18 years – see paediatric section
Appointment types available to MREH clinicians	Urgent Routine

Glaucoma	
Conditions treated	Glaucoma, ocular hypertension, suspected glaucoma
Examinations or information required	Full optometric report including intraocular pressure, Van Herick assessment, optic disc examination, visual field assessment. All patients with suspected glaucoma should undergo repeat readings or be seen by a GERS Optometrist prior to referral to MREH. Therefore, all referrals should include Goldmann applanation tonometry (GAT). Nice guidance specific to glaucoma is available here, with section 1.1 aimed at primary care professionals to support referral. https://www.nice.org.uk/guidance/ng81/chapter/Recommendations
Key information for referrer	Ensure repeat readings and Glaucoma Enhanced Referral schemes are used first if they are commissioned by the CCG responsible for patient's care.
Ages accepted	18 years and over Patients younger than 18 years – see paediatric section
Appointment types available to MREH clinicians	Urgent Routine

Medical Retina	
Conditions treated	Retinal pathology, retinal lesion, retinal vein occlusion, retinal artery occlusion, retinal embolus, retinal vascular conditions, retinal haemorrhage, retinal macroaneurysm, central serous retinopathy, retinoschisis, inherited retinal conditions, retinal dystrophy, myopic degeneration, drug induced retinal toxicity including chloroquine and hydroxychloroquine toxicity, diabetic retinopathy, diabetic macular oedema
Examinations or information required	Up to date optometric report.
Key information for referrer	If you suspect WET AMD, Myopic CNV, CNV of unknown cause -Refer patient to the EMAC service (see guidance on page nine). Artery occlusion of recent onset (within 24 hours) -send to EED; If not recent onset/TIA -send to GP the same day & routine MR
Ages accepted	18 years and over
Appointment types available to MREH clinicians	Urgent Routine

Neuro-ophthalmology	
Conditions treated	Functional visual loss, Diplopia, Strabismus, Acquired ocular motility deficit, Blurred vision, Comitant strabismus, Unexplained headache with visual concerns , Homonymous hemianopia (consider referral to EED), Decreased visual acuity, Nystagmus, Optic neuritis and optic neuropathy, Paracentral scotoma, Optic chiasmal lesions Retrochiasmal disease, Occipital stroke (consider referral to EED), Horner syndrome, Cranial nerves palsy (III, IV, VI) , Myasthenia gravis, Anisocoria, Adie tonic pupil, Light-near dissociation, Parinaud syndrome (dorsal midbrain syndrome), Vertical gaze palsy, Argyll Robertson pupil, Neurosyphilis, Paradoxical pupillary reaction, Lebers hereditary optic neuropathy, Dominant optic atrophy, Relative afferent pupillary defect (RAPD), Marcus Gunn pupil, Neurofibromatosis, Aberrant regeneration of cranial nerve iii, Abnormal pupillary function, Optic nerve hypoplasia, Ischaemic optic neuropathy (consider referral to EED)
Examinations or information required	Up to date optometric report.
Key information for referrer	Acute loss of vision or unilateral swollen optic nerves need to go to EED Homonymous hemianopia, consider referral to EED Occipital stroke, consider referral to EED Ischaemic optic neuropathy, consider referral to EED
Ages accepted	18 years and over
Appointment types available to MREH clinicians	Urgent Routine

Paediatric Squint and vision clinic	
Conditions treated	<p>A number of community orthoptic services, separate to MREH, should be referred to initially for some children. They provide a suitable clinic closer to home. Please note this varies based on the patient's age and CCG – see 'Key Information for referrer' box below.</p> <p>For Manchester CCG patients aged 8 years or above, refer the following conditions to MREH: Ocular motility disorders, squint, strabismus, reduced vision, amblyopia, double vision, diplopia, binocular vision disorders.</p>
Examinations or information required	<p>Up to date optometric report. All refraction information, including what the prescription is, whether it has been issued and if cyclopentolate was used for the refraction. Please include information regarding the health of the fundus and media; this is needed for triage timeline decisions.</p> <p>Include information regarding any learning disabilities and autism, as part of free text field or patient factors boxes. This allows MREH to make adjustments required for children with mild, moderate and severe learning disabilities.</p>
Key information for referrer	<p>If urgent, acute onset please send to Emergency Eye Department, MREH.</p> <p>If any significant glasses prescriptions requirements are found, please issue these.</p> <p>Exclusion - The below conditions should be referred to the community orthoptics teams for:</p> <ul style="list-style-type: none"> - Trafford, Salford, Tameside and Glossop CCG patients up to 18 years old. and - Manchester CCG patients up to 7 years, 11 months <p>Ocular motility disorders, squint, strabismus, reduced vision, amblyopia, diplopia, binocular vision disorders.</p> <p>To find this service on Opera select: Children and adolescents > Ophthalmology – orthoptics > And select '[CCG name] Orthoptic service -paediatric'</p> <p>Exclusion - Patients over the age of 18 need to be referred to a MREH sub-specialty service.</p>
Ages accepted	0 - 17yrs 11 months
Appointment types available to MREH clinicians	Urgent Routine

Paediatric clinic	
Conditions treated	Ptosis / eyelid disorders, uveitis, optic nerve disorders, corneal and external eye disease, paediatric cataract, monocular diplopia, new onset nystagmus, oscillopsia, paediatric glaucoma, epiphora, non-resolving eyelid cysts or eyelid disorders affecting vision, retinal pathology, ocular structural abnormalities, inherited eye disease
Examinations or information required	<p>Up to date optometric report. All refraction information, including what the prescription is, whether it has been issued and if cyclopentolate was used for the refraction. Please include information regarding the health of the fundus and media; this is needed for triage timeline decisions.</p> <p>Include information regarding any learning disabilities and autism, as part of free text field or patient factors boxes. This allows MREH to make adjustments required for children with mild, moderate and severe learning disabilities.</p>
Key information for referrer	<p>Exclusion - Patients over the age of 18 need to be referred to a MREH sub-specialty service.</p> <p>Please note, for Strabismus and amblyopia, follow the guidance in the 'Paediatric Squint and vision' table above. Including referral to community orthoptic clinics.</p>
Ages accepted	0 - 17yrs 11 months
Appointment types available to MREH clinicians	<p>Urgent Routine</p> <p>The urgent or routine appointment label on the referral may be changed by the triaging clinician who will ask for an appointment to be booked within a reasonable timeframe based on the referral information. Caution is recommended when discussing urgent and routine labels with parents/guardians/children, as the hospital is able to change these and will do so based on the clinical information provided.</p>

Oculoplastics

<p>Conditions treated</p>	<p>Chalazion, blepharitis, noninfectious dermatoses of eyelid, dermatochalasis, inflammation of eyelid, entropion, trichiasis, ectropion, lagophthalmos, blepharochalasis, ptosis, eyelid function disorder, lid retraction, blepharophimosis, ankyloblepharon, degenerative disorders, chloasma of eyelid, madarosis of eyelid, vitiligo of eyelid, hypertrichosis, retained foreign body, parasitic infestation of eyelid in leishmaniasis, parasitic infestation of eyelid in loiasis, parasitic infestation of eyelid in onchocerciasis, parasitic infestation of eyelid in phthiriasis, involvement of eyelid in herpesviral, involvement of eyelid in leprosy, involvement of eyelid in molluscum contagiosum, involvement of eyelid in tuberculosis, involvement of eyelid in yaws, involvement of eyelid in zoster, involvement of eyelid in impetigo, disorder of lacrimal system, dacryops, dry eye syndrome, watery eyes, lacrimal cyst, lacrymal gland atrophy, epiphora, acute inflammation of lacrimal passages, acute dacryocystitis, subacute dacryocystitis, acute phlegmonous, subacute phlegmonous, acutecanaliculitis, subacute canaliculitis, acute dacryopericystitis, subacute dacryopericystitis, chronic inflammation of lacrimal passages, chronic dacryocystitis, chronic lacrimal canaliculitis, chronic lacrimal mucocele, lacrimal system stenosis, lacrimal system insufficiency, dacryolith, punctal ectropion, eversion of lacrimal punctum, stenosis of lacrimal canaliculi, stenosis of lacrimal duct, stenosis of lacrimal sac, disorder of lacrimal system, lacrimal fistula, disorder of orbit, acute inflammation of orbit, abscess of orbit, cellulitis of orbit, osteomyelitis of orbit, periostitis of orbit, tenonitis of orbit, chronic inflammatory disorder of orbit, granuloma of orbit, exophthalmic conditions, displacement of globe, haemorrhage of orbit, oedema of orbit, deformity of orbit, atrophy of orbit, exostosis of orbit, enophthalmos, cyst of orbit, dysthyroid exophthalmos, thyroid eye disease, thyroid ophthalmopathy, Grave's orbitopathy</p>
<p>Examinations or information required</p>	<p>Up to date optometric report. Please use the free text field to document the presenting complaint, this helps the triage process. Attaching an image to the referral is recommended where relevant.</p>
<p>Key information for referrer</p>	<p>Suspected non-BCC periocular cancers need to be referred urgently. All other BCCs will be seen on a soon basis, usually within six weeks.</p>
<p>Ages accepted</p>	<p>All ages</p>
<p>Appointment types available to MREH clinicians</p>	<p>Urgent Routine</p>

Uveitis	
Conditions	Uveitis, chorioretinitis, anterior uveitis, intermediate uveitis, posterior uveitis, panuveitis, retinal vasculitis, retinitis, intraocular lymphoma, scleritis
Examinations or information required	Up to date optometric report required Visual acuity and IOP required OCT and Optos colour photos if available Any previous OCT or colour photo if available. Medication list if available.
Key information for referrer	Where possible, please take patient consent to share their summary care record
Ages accepted	16 years and over
Appointment types available to MREH clinicians	Urgent Routine

Vitreoretinal	
Conditions	Epiretinal membrane (macular pucker), vitreomacular traction and/or macular hole, vitreous haemorrhage, floaters, tractional retinal detachment, complications of cataract surgery and trauma. Rhegmatogenous retinal detachment and retinal tears; send patient straight to eye emergency department.
Examinations or information required	Up to date optometric report
Key information for referrer	Rhegmatogenous retinal detachment and retinal tears; send patient straight to eye emergency department at MREH. Patients under the age of 18 should be referred to the Paediatric clinic in the first instance but may have surgery with the Vitreoretinal Unit if indicated.
Ages accepted	18 years and over
Appointment types available to MREH clinicians	Urgent Routine

YAG laser	
Conditions	Posterior capsular opacification
Examinations or information required	Up to date optometric report Tonometry (contact or non-contact) should be included. OCT is useful if available in your practice
Key information for referrer	Please note, we do not perform YAG laser at the Cataract Centre at Withington community hospital. Referrals for YAG laser need to go to the YAG option via Opera. Referral to the cataract service will significantly delay the patient. Laser procedures separate from PCO should be referred to the sub speciality responsible for the underlying pathology. E.g. glaucoma for - Laser iridotomy. If the patient is under 18, please refer to paediatrics.
Ages accepted	18 years and over
Appointment types available to MREH clinicians	Urgent Routine

Comprehensive Care/Differential Diagnosis	
Conditions treated	General ophthalmic problems which do not align to above sub-specialties or multiple eye conditions, who require an initial assessment and treatment.
Procedures performed	Diagnosis, advice.
Examinations or information required	Up to date optometric assessment report
Key information for referrer	<p>We do not deal with accidents/acute events - such patients should attend the Eye Emergency Department.</p> <p>Please be aware, this is a small service which can only see patients whose presentation does not align to a sub- specialty above. If a referral to this service does align better to a different sub-specialty, it will be returned asking you refer to the correct sub-specialty.</p> <p>Exclusions to note: Suspected Cancers, chronic conditions, patients who have visited MREH previously (and have a diagnosed condition) should be referred to our more specialised services.</p> <p>Guidance on where to refer the following conditions:</p> <p>Medical Retina - hydroxychloroquine screening, retinal haemorrhages, naevus, birthmark, freckle.</p> <p>Cataract - pre surgery, cataract, dissatisfied patient post op.</p> <p>Cornea - post refractive surgery problems, corneal dystrophy.</p> <p>Oculoplastics - Ptosis, chalazion, lid lump, watery eye.</p> <p>Neuro-ophthalmology - Anisocoria, optic neuropathy</p> <p>Adult strabismus service - Diplopia, double Vision</p> <p>Eye emergency department - Papilloedema, swollen optic discs.</p>
Ages accepted	18 years and over
Appointment types available to MREH clinicians	Urgent Routine