

Cervical Ectopy (Cervical Erosion)

Welcome to Emergency Gynaecology Unit

You may have been diagnosed with a Cervical Ectopy. This has also commonly been known as an erosion or ectropion of the cervix.

What is a cervical ectopy?

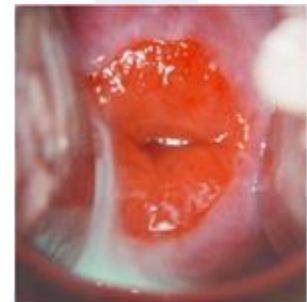
A cervical ectopy is a red, velvet like and often raw looking area with a graze type appearance on the outer surface of the cervix. This is a benign (non-cancerous) condition and does not lead to cervical cancer.



Normal cervix



Small ectopy



Large ectopy

What causes cervical ectopy?

The most common cause of a Cervical Ectopy is normal hormonal changes. Women who are taking oral contraceptives often have cervical ectopy. This is thought to be a response to high levels of oestrogen in the body. The cells which line the inside surface of the cervix often travel and sit on the exterior surface of the cervix. This can be seen when examination with a speculum is performed.

Symptoms

Unexpected vaginal bleeding, spotting or blood streaked discharge, often during or following sexual intercourse, are common if you have a cervical ectopy. This is because the raw area can be irritated by the penis during intercourse. Bleeding may not happen every time and commonly occurs up to 12 hours following intercourse.

Bleeding can also occur if a vaginal infection such as thrush or bacterial vaginosis is present as these common conditions irritate the area. Some women have no symptoms at all and are only diagnosed with an ectopy on routine examinations such as smear tests.

What if I'm pregnant?

Cervical ectopy is very common during pregnancy. Pregnant women are more likely to experience symptoms due to hormonal changes and high levels of oestrogen in their body.

Although these changes are common, any unusual discharge or bleeding in pregnancy should be investigated by your GP, midwife or early pregnancy unit to ensure there is no other cause of the bleeding.

What follow up will I need?

Treatment is not usually necessary and symptoms will resolve by themselves. If you are pregnant, the ectopy will usually disappear by itself within 3-6 months following the birth of your baby.

Sometimes an ectopy can cause recurrent vaginal infections or abnormal bleeding between periods. If this is troublesome, you may be referred for treatment to cauterise or freeze the cells to alleviate these symptoms.

It is important that if you are invited for routine cervical screening you should attend. This helps to assess your cervix regularly and check for any abnormal cells or changes that may need further treatment.



It is important to contact the unit or your GP if you have continuous bleeding, heavy bleeding, are passing clots, have abdominal pain or a smelly discharge.

If you have any other questions not covered in this leaflet, please do not hesitate to ask your nurse or doctor.

Saint Mary's Hospital contact numbers:

Emergency Gynaecology Unit (EGU)

(0161) 276 6204

(7 Days 8.00 am – 9.30 pm)

Gynaecology Ward 62

(0161) 276 6518 or (0161) 276 6410 (24 hours)

Nurse Colposcopists

(0161) 276 5485

(Monday – Friday, 8.30 am - 5.00 pm)

Useful addresses

NHS Choices

www.nhs.uk