



# The Manchester Birth Centre

The Manchester Birth Centre is a birth centre in the hospital, also known as an alongside midwifery-led unit.

The birth centre is found inside Wythenshawe maternity unit.

[View our virtual tour of the Manchester Birth Centre](#)



## Who is this birth setting suitable for?

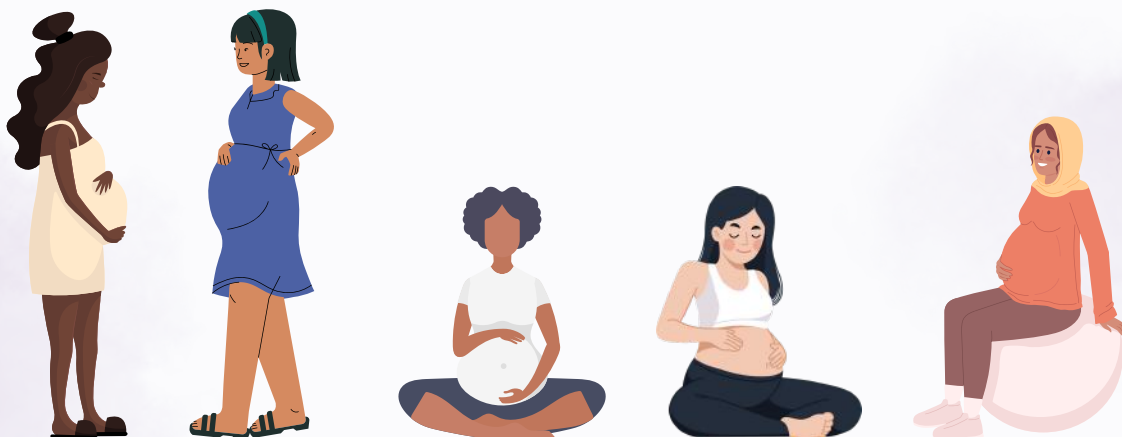
Giving birth at the Manchester Birth Centre may be an option for you if:

- You and your baby are healthy
- Your pregnancy has been straight-forward
- You are full-term (37 weeks or more of pregnancy)

If you would really like to use the birth centre, but have complications or other risk factors, please discuss your options with your midwife or consultant at the hospital. They will be able to talk you through the risks and benefits of your options. This might include referral to a birth options clinic.

## How many birth rooms are there and how many have pools?

The birth centre has 5 spacious, homely rooms all with a birthing pool.



## What are the rooms like?

All rooms are set up with various furniture and facilities designed to help you feel calm, safe and in control such as:

- A birthing pool
- Soft mood lighting and choice of music
- Birthing aids such as birth balls, birth couches and birth stools
- Private bathroom with toilet and shower facilities
- A bed
- Tea and coffee making facilities
- Equipment for midwives to monitor you and your baby
- Essential emergency medication and equipment should it be needed for you or your baby e.g. if your baby requires any support with breathing following birth (resuscitation).

## What pain relief is available?

The following types of pain relief are available in the birth centre setting:

\*Pool

\*Gas and air (entonox)

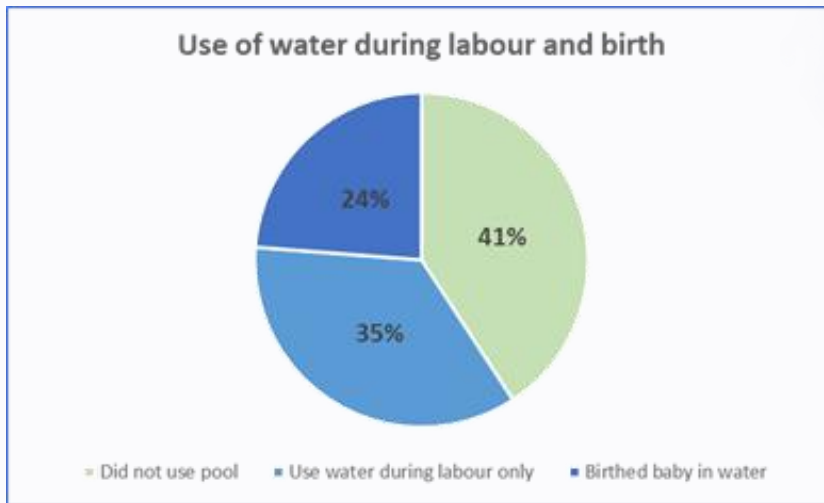
\* Pethidine or diamorphine

You may also wish to use other alternative pain relief options such as TENS, massage, hypnobirthing and aromatherapy. Speak to your midwife about how to organise this yourself.



# What are the birth statistics for the Manchester Birth Centre ?

About 900 women use the birth centre every year and there are just under 700 births a year on the birth centre. Approximately 30% of women attending the birth centre in labour will transfer to the delivery suite which is across the corridor. The most common reasons for transfer are a delay in labour (45%) or for further pain relief e.g. epidural (20%).



About 60% of women use a pool during labour and 24% give birth in water.

## Who can be with you and when?

You can have 2 support people with you during your labour and birth. 1 support person (or birth partner) may stay with you the entire time including overnight depending on what time you gave birth.



## How do I get there?

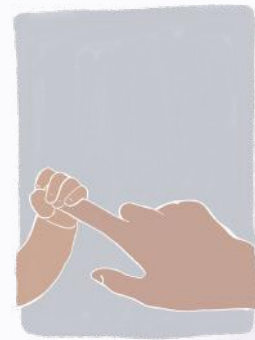
Saint Mary's @ Wythenshawe is located at Floats Road, Wythenshawe, Manchester, M23 9LT. [Car parking information.](#) If you are in labour, you need to go to Entrance 13 on the south side of the hospital off Floats Road. There is a drop off area at the front of the entrance. The car park for our Maternity Unit is opposite Entrance 13.

Watch the virtual tour to see where you need to go.

## What do people who chose this birth place say about it?

“

“I chose to have my baby at the birth centre within Wythenshawe Hospital as it was a very calming environment to bring my baby into the world. It was as comforting as being at home but you knew the midwives and doctors were on hand just in case. I felt 100% comfortable in the birth centre and I loved the fact that we had the consistent care of one midwife as opposed to being in a very medical/clinical environment.”



”

## What if you want more information?

You can talk to your midwife or doctor, see further resources below:

**Birth centre in the hospital**  
**Choosing where to have your baby**



Other birth centres to consider:  
**The Bluebell Birth Centre at North Manchester Hospital**