



## Manchester Royal Infirmary

# Magnetic Resonance Imaging (MRI)

Information For Patients





## What is an MRI scan?

**MRI stands for Magnetic Resonance Imaging.**

It is a painless medical scan of your body, which uses a large magnetic field and radio waves to produce a picture of your body. A special antenna is placed next to your body to receive the small signals given out by your body to make the images that doctors can use to treat you.

MRI uses non-ionising radiation and so is considered safe for most patients.

## Important information

The scanner uses a powerful magnet, it is important therefore that you complete the safety questionnaire. This should have been sent out before your appointment. Please ensure you have read and understood it fully, in order to avoid any unnecessary delays.

On arrival a member of staff will review your safety questionnaire with you.

It is important that you can answer any safety questions staff may have in the department. If you require an interpreter or have any communication difficulties, please contact the department, as we are unable to allow family members or friends to interpret for you.

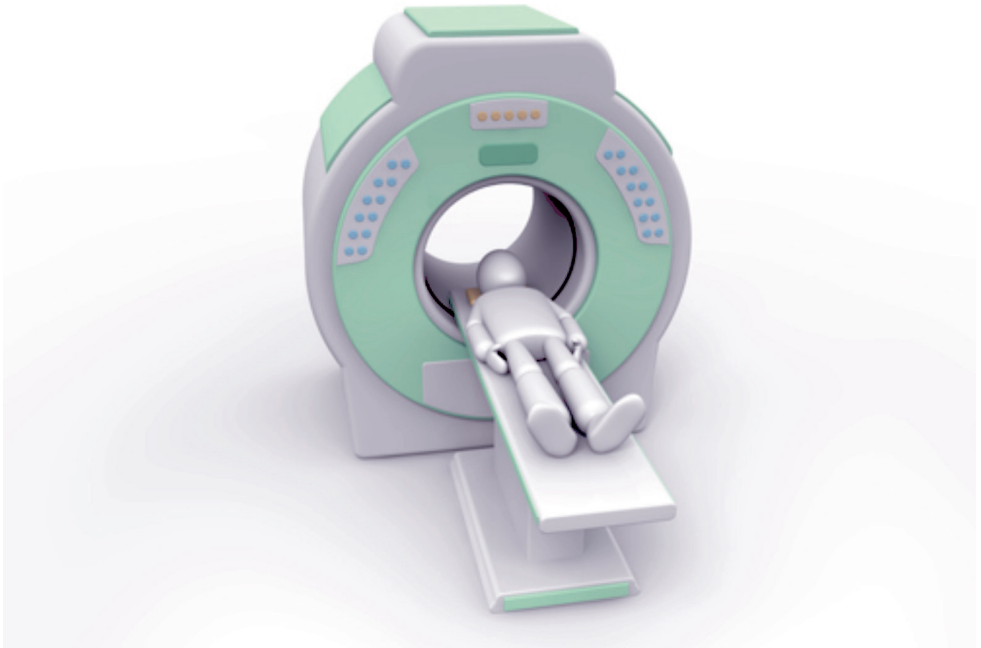
If you have any metal implants, such as a cardiac pacemaker, neural stimulator or diabetic pump please contact the department before the scan date, as you may not be able to have an MRI scan.

If you are pregnant, or think you may be pregnant please contact the department.

## What will happen?

After reporting to reception you will be greeted by a member of staff. You may be asked to change into a gown and remove any jewellery, watch or any other metallic objects from your body. If you prefer, you can bring your own pyjamas or loose fitting non-metallic clothing (such as a T-shirt and jogging bottoms/shorts). To save any delay and to ensure your belongings are safe, it is advised that you try to remove any jewellery before attending and leave these at home.

Scans take between 10-45 minutes. During the scan you will have to lie flat within the scanner. This is a 1.5 metre tunnel, which is open at both ends. If you suffer from claustrophobia you may require a light sedative, which can be obtained by you from your GP, and brought with you for the scan.



The scan is very noisy, and you will be given some headphones or ear plugs to wear. You can bring your own CD if you would like to listen to some music (NB this is not possible with some scans. The department staff will be able to advise you).

Occasionally you may be given an injection during the scan of special MRI dye into a vein in your arm.

The radiographer will monitor you during your scan and you will be able to talk to them through an intercom if you need assistance or feel unwell.

### **Are there any side effects?**

Rarely some people have a mild reaction if they are given an injection of the dye discussed earlier.

### **How will I get the results of my scan?**

Specialist doctors will look at your scan and a report will be made available to the doctor who requested the scan. This can take time but we will send the results to your doctor as soon as possible.

### **Are there any risks?**

MRI is considered to be safe. It does not use X-rays and is not associated with any increased risk of cancer.

If you are pregnant you are advised not to have an MRI scan unless your doctor deems it urgent. Although MRI is safe for the mother, there may be a small risk to your baby in very early pregnancy. If you have any concerns please contact the department before your scan.

Although MRI uses a magnet, some metallic implants are safe to scan. Please contact the department if you have any so we can assess if it is safe for you to have the scan, before you attend the department.

### **Further Information**

[www.goingfora.com](http://www.goingfora.com)

[www.nhs.uk](http://www.nhs.uk)

### **Videos of an MRI scan can be seen at:**

<http://www.mayoclinic.com/health/mri/MM00395>

[www.youtube.com/watch?v=AwXJNXNcLNs](http://www.youtube.com/watch?v=AwXJNXNcLNs)

<http://youtube/DZTXa4qerl4>

CT/MRI Department

Department of Radiology

Manchester Royal Infirmary

Oxford Road

Manchester

M13 9WL

Telephone number 0161 276 8601

Monday to Friday between 8.00 am and 5.00 pm



# No Smoking Policy

The NHS has a responsibility for the nation's health.

Protect yourself, patients, visitors and staff by adhering to our no smoking policy. Smoking is not permitted within any of our hospital buildings or grounds.

The Manchester Stop Smoking Service can be contacted on  
Tel: (0161) 205 5998 ([www.stopsmokingmanchester.co.uk](http://www.stopsmokingmanchester.co.uk)).

## Translation and Interpretation Service

It is our policy that family, relatives or friends cannot interpret for patients. Should you require an interpreter ask a member of staff to arrange it for you.

تنص سياستنا على عدم السماح لافراد عائلة المرضى او اقاربهم او اصدقائهم بالترجمة لهم. اذا احتجت الى مترجم فيرجى ان تطلب ذلك من احد العاملين ليرتب لك ذلك.

بماری یہ پالیسی ہے کہ خاندان ، رشتہ دار اور دوست مریضوں کے لئے ترجمہ نہیں کرسکتے۔ اگر آپ کو مترجم کی ضرورت ہے تو عملے کے کسی رکن سے کہیں کہ وہ آپ کے لئے اس کا بندوبست کر دے۔

ইহা আমাদের নীতি যে, একজন রোগীর জন্য তার পরিবারের সদস্য, আত্মীয় বা কোন বন্ধু অনুবাদক হতে পারবেন না। আপনার একজন অনুবাদকের প্রয়োজন হলে তা একজন কর্মচারীকে জানান অনুবাদকের ব্যবস্থা করার জন্য।

Nasze zasady nie pozwalają na korzystanie z pomocy członków rodzin pacjentów, ich przyjaciół lub ich krewnych jako tłumaczy. Jeśli potrzebują Państwo tłumacza, prosimy o kontakt z członkiem personelu, który zorganizuje go dla Państwa.

Waa nidaamkeena in qoys, qaraaboamasaaxiiboaysanu tarjumikarinbukaanka. Haddiiaad u baahototarjumaankacodsoxubinka mid ah shaqaalahainaykuusameeyaan.

我们的方针是，家属，亲戚和朋友不能为病人做口译。如果您需要口译员，请叫员工给您安排。



@CMFTNHS



Follow us on  
Facebook

[www.cmft.nhs.uk](http://www.cmft.nhs.uk)

© Copyright to Central Manchester University Hospitals NHS Foundation Trust