



**Manchester University**  
NHS Foundation Trust



## Manchester University NHS Foundation Trust

Education Campus Facilities

Simulation and Human Factors Centre

Manchester Surgical Skills and Simulation Centre



# Contents

02	Education Campus Sites
03	Event Management Services
04	Hospitality
05	Supported Events
06	Facilities and Equipment
07 - 10	Manchester Royal Infirmary
11 - 14	Wythenshawe Hospital
14 - 15	North Manchester General Hospital
16	Simulation and Human Factors Centre
17	Manchester Surgical Skills Simulation Centre





# Education Campus Sites

## Manchester Royal Infirmary

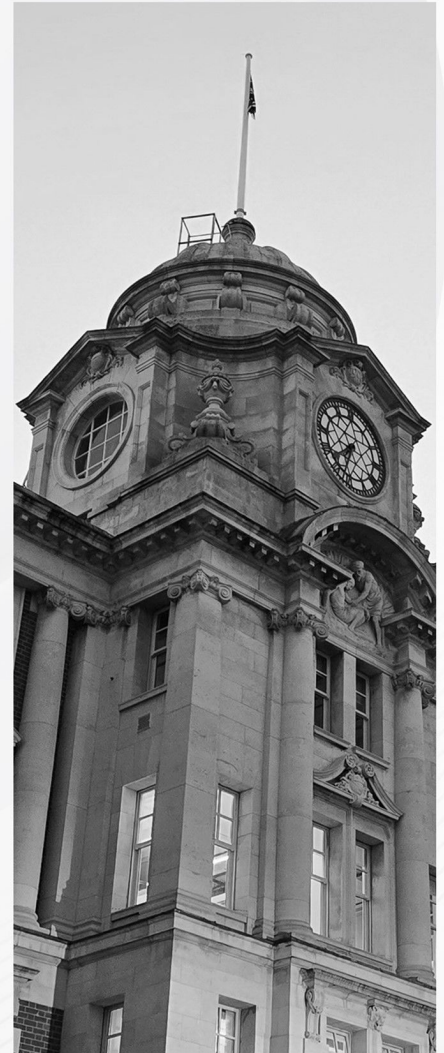
The Education Campus is situated in a prime location on the main hospital site in Manchester city centre, within the Oxford Road Campus. It offers a variety of purpose-built conference, training, and meeting rooms available year-round for both clinical and non-clinical events, including daytime, evenings, and weekends. These facilities are ideal for study days, seminars, and conferences.

Our conference and seminar facilities are housed in three adjacent buildings: the Postgraduate Centre, the Undergraduate Centre, and the Library. All three are located along the Boulevard, the main thoroughfare of the central Manchester site at the Oxford Road Campus, conveniently close to on-site car parks.

The historic Postgraduate Centre, originally part of the hospital, was relocated to Oxford Road from Piccadilly Gardens in the centre of Manchester in 1908. At that time, it provided teaching and education facilities and included a library on the upper floors, while the ground floor housed the X-ray department.

Built in a traditional style with striking stone carvings, the Postgraduate Centre has since been fully modernised and refurbished. It now features a 200-seat lecture theatre, spacious seminar rooms, a reception and an exhibition area for poster displays, and separate refreshment and dining areas, complete with an outdoor garden.

The Undergraduate Centre, added to the hospital campus in 2009, was designed to meet the growing educational and training needs of healthcare professionals. It includes two theatre-style lecture theatres, ten seminar rooms, two breakout areas, and a dedicated space for refreshments.



## North Manchester General Hospital

In recent years, North Manchester General Hospital has undergone significant redevelopment to enhance its size and layout, including the addition of a new multi-storey car park. Further transformative developments are planned, including a new hospital and a broader health and care campus. These "once-in-a-generation" plans aim to revitalise both the hospital and the North Manchester area by creating new jobs, promoting healthy lifestyles, and fostering skill development to benefit the local community and beyond.

The Education Campus will be a key beneficiary of this redevelopment, with plans for a brand-new education centre at the heart of the hospital. Currently, the Postgraduate Education Centre is located at the corner of Delaunays Road and Central Drive, opposite the Accident and Emergency department.

The Postgraduate Education Centre houses the Education Campus team, the Library, and the Postgraduate and Undergraduate teams. It features a large lecture theatre with seating for up to 100 people, along with six additional rooms of various sizes for educational events.

Since the merger with Manchester Foundation Trust (MFT), significant progress has been made on the North Manchester site, and staff are eagerly looking forward to a bright and promising future.





## Wythenshawe Hospital

Wythenshawe Hospital is a major acute teaching hospital, recognised as a centre of clinical excellence. It provides both district general hospital services and specialist tertiary services to the local community.

The Education and Research Centre (ERC) has been specifically designed with learners in mind, offering an environment ideal for education and training. The building features a variety of teaching spaces, including seminar rooms, flat and tiered lecture theatres, and clinical skills rooms. Additionally, it includes a mock ward and a state-of-the-art simulation and human factors centre, equipped with a wide range of models and manikins. These facilities are available for hire during the regular working week as well as outside standard hours, including evenings and weekends. We also proudly offer a comprehensive service for conducting professional clinical examination assessments.

Customer service is a priority for us. Our staff are highly experienced in organising, administering, facilitating, and delivering a wide range of educational events tailored to our customers' requirements. All our rooms are equipped with advanced audio-visual equipment, and dedicated technical support staff are available throughout your event to provide full assistance.

There are multiple travel options available for reaching Wythenshawe Hospital, including car, park-and-ride, bus, tram, and bicycle. Detailed information can be found in the "Patients and Visitors" section of the official MFT Wythenshawe Hospital website. Pre-paid car parking tickets can also be arranged by contacting the car parking office.

# Event Management Services

The Education Campus teams across Manchester University Hospital Foundation Trust are proud to offer a comprehensive event management service designed to support every aspect of your course or event. We have successfully facilitated a diverse range of events, including large-scale conferences, national examinations, hands-on wet-lab surgical training workshops, and even film premieres.

Our wide range of support services includes organising hospitality, sourcing ethically obtained tissue for wet-lab workshops, and liaising with sponsors to secure funding to cover event costs. Additionally, we provide access to specialised software to promote your event and streamline enrolment. Each site also has a dedicated audiovisual team ready to assist you both before and during your event.

Please contact the relevant Education Campus site to discuss your event and explore how we can collaborate to ensure it is an unforgettable experience.

You can browse all the available facilities in this brochure to gain an understanding of the types of events we can accommodate. We look forward to working with you!



**Manchester Royal  
Infirmary**

☎ 0161 701 1785

✉ [edcampus.roombookingrequest@mft.nhs.uk](mailto:edcampus.roombookingrequest@mft.nhs.uk)



**North Manchester  
General Hospital**

☎ 0161 720 2720

✉ [roombookings.nmgh@mft.nhs.uk](mailto:roombookings.nmgh@mft.nhs.uk)



**Wythenshawe  
Hospital**

☎ 0161 291 5769

✉ [xroombooking@mft.nhs.uk](mailto:xroombooking@mft.nhs.uk)



# Hospitality



Sodexo are the exclusive providers of hospitality at Manchester Royal Infirmary and Wythenshawe Hospital. Sodexo provide a range of hot and cold buffets, which include menu options for kosher, halal, vegan, and specialty dietary requirements. Sodexo's dedicated hospitality team is more than happy to discuss your events individual needs and arrange your function accordingly.

Sodexo also manage franchises for Costa, Greggs, Starbucks, and Subway. Sandwich platters from Subway can also be ordered via Sodexo for your event.

For hospitality at North Manchester General Hospital you can choose The Gallery Restaurant who offer a range of sandwich platters and snacks. Alternatively, you can arrange your own external catering providing that health and safety and food hygiene standards have been adhered to.

For more information, please contact: -

#### **Manchester Royal Infirmary**

✉ [hospitalitybookings.centralmanchesterpfi.uk@sodexo.com](mailto:hospitalitybookings.centralmanchesterpfi.uk@sodexo.com)  
☎ 0161 701 1857

#### **North Manchester General Hospital (The Gallery)**

✉ [nmgh.catering@mft.nhs.uk](mailto:nmgh.catering@mft.nhs.uk)  
☎ 0161 624 0420

#### **Wythenshawe Hospital**

✉ [wythenshawe.hospitality@sodexo.com](mailto:wythenshawe.hospitality@sodexo.com)  
☎ 0161 291 5761





# Supported Events

The Education Campus facilities across North Manchester General Hospital, Manchester Royal Infirmary, and Wythenshawe Hospital boasts a wide variety of rooms available to accommodate a broad spectrum of events. We have Lecture Theatres that can accommodate up to 190 delegates, videoconferencing suites that are purpose designed for multi-disciplinary team meetings, wet-labs that are designed to accommodate surgical skills training, and a variety of different sized rooms that are suitable for your training needs. In total we have 57 rooms that are available for hire.

Suitable usage of the rooms advertised in the document will be identified with the icons explained below. If you have any specific queries relating to any of the rooms, please contact the relevant site using the information in the contact section of this brochure.



These rooms are suitable for face-to-face meetings, interviews and other types of small gatherings. The available facilities may change depending on the room and location and it is advisable to liaise with the respective Education Campus site to discuss your needs prior to your event.



These rooms are suitable for educational activities including seminars, mandatory training and non-clinical practical training. These venues all come with an MFT PC as standard and appropriate audiovisual equipment to deliver your educational training session.



These rooms are suitable for larger lectures and events. If you intend to run a larger event it is advisable to liaise with the respective Education Campus to discuss event management services, hospitality and how to utilise the campus facilities to make the most of your event.



These rooms are suitable for hybrid and videoconferencing meetings. It is advisable to liaise with the respective Education Campus team to inform them that you plan to use the room for videoconferencing. The onsite audiovisual team can then support you to ensure that the room is configured prior to your meeting.



These rooms are suitable for clinical skills training. Training that requires the use of live tissue are limited to certain rooms across the Education Campus. This will be detailed within the description of the room. You must inform the respective Campus site of you intend to use a room as a wet lab clinic.



# Available Facilities and Equipment

The facilities and equipment available for each room are detailed in a table within the room's description. In most cases, the listed facilities are included as standard. However, there may be instances where certain facilities are suitable for use in the room but are not provided as standard. It is recommended to consult with the respective Education Campus team before booking to discuss your proposed event and ensure your requirements can be met.

We also welcome the use of third-party equipment to enhance training within the Education Campus facilities. However, this must be discussed in advance with the respective Education Campus team to ensure compliance with local policies and to complete necessary safety checks prior to your event.

Free user Wi-Fi is available throughout all Education Campus sites. For further support, please contact a member of the Education Campus team during your visit.

<b>Projector</b>	The room has a projector installed as standard.
<b>TV Screen</b>	The room has a TV or TVs installed as standard.
<b>MFT PC</b>	The room has an MFT Trust PC. External service users can gain access to the network by liaising with the onsite audiovisual team.
<b>PA System</b>	The room has a public address system integrated into the lectern.
<b>Hearing Loop</b>	The room has a hearing loop installed as standard.
<b>Webcam</b>	Webcams are either permanently in situ or can be requested from the onsite audiovisual team.
<b>Speakerphone</b>	A speaker phone can be requested from the onsite audiovisual team.
<b>Roving Mics</b>	The room has a dedicated microphone system. Liaise with the onsite audiovisual team for specifics.
<b>Lapel Mics</b>	The room has a dedicated microphone system. Liaise with the onsite audiovisual team for specifics.
<b>Mixing Desk</b>	The room has a mixing desk which can be utilised for additional sound inputs. Liaise with the onsite audiovisual team for specifics.
<b>Clicker</b>	Presentation clickers can be requested from the onsite audiovisual team.
<b>Portable PA System</b>	A portable public address system can be requested from the onsite audiovisual team. Not provided as standard. Charges may apply.
<b>Portable TV Screen</b>	A portable tv screen can be requested from the onsite audiovisual team. Not provided as standard. Charges may apply.
<b>Videoconferencing</b>	A videoconferencing system is either in situ or can be requested from the onsite audiovisual team.
<b>HDMI Connectivity</b>	The room has HDMI connectivity for connecting your own device. Liaise with the onsite audiovisual team for specifics and assistance.
<b>Flipchart</b>	The room has a flipchart in situ or one can be provided by liaising with the onsite education campus team.
<b>Tables</b>	The room comes with tables as standard. Additional tables can be provided, if appropriate, by liaising with the onsite education campus team.
<b>Display Boards</b>	Display boards can be requested.



## POSTGRADUATE LECTURE THEATRE, MRI



Capacity	190	Available Facilities	
Dimension	16M x 10M	Projector	● Mixing Desk
Location	Second Floor	TV Screen	● Presentation Clicker
		MFT PC	● Portable PA System
		PA System	● Portable TV Screen
		Hearing Loop	● Videoconferencing
		Webcam	● HDMI Connectivity
		Speakerphone	● Flipchart
		Roving Mic(s)	● Tables
		Lapel Mic(s)	● Display Boards

The Postgraduate Lecture Theatre is the largest capacity room across the MFT Campus. It is an ideal location for hosting large events and can be booked alongside the rest of the Postgraduate Building for a complete event centre.

## SEMINAR ROOM 1, MRI



Capacity	40	Available Facilities	
Dimension	9.5M x 6M	Projector	● Mixing Desk
Location	Ground Floor	TV Screen	● Presentation Clicker
		MFT PC	● Portable PA System
		PA System	● Portable TV Screen
		Hearing Loop	● Videoconferencing
		Webcam	● HDMI Connectivity
		Speakerphone	● Flipchart
		Roving Mic(s)	● Tables
		Lapel Mic(s)	● Display Boards

Seminar Room 1 is ideal for medium-scale teaching sessions and practical training. When booked alongside Seminar Room 2 the partition can be opened to create a larger space ideal for large events and cabaret seating.

## SEMINAR ROOM 2, MRI



Capacity	40	Available Facilities	
Dimension	9.5M x 6M	Projector	● Mixing Desk
Location	Ground Floor	TV Screen	● Presentation Clicker
		MFT PC	● Portable PA System
		PA System	● Portable TV Screen
		Hearing Loop	● Videoconferencing
		Webcam	● HDMI Connectivity
		Speakerphone	● Flipchart
		Roving Mic(s)	● Tables
		Lapel Mic(s)	● Display Boards

Seminar Room 2 is ideal for medium-scale teaching sessions and practical training. When booked alongside Seminar Room 1 the partition can be opened to create a larger space ideal for large events and cabaret seating.

## EXHIBITION AREA, MRI



Capacity	N/A	Available Facilities	
Dimension	N/A	Projector	● Mixing Desk
Location	Ground Floor	TV Screen	● Presentation Clicker
		MFT PC	● Portable PA System
		PA System	● Portable TV Screen
		Hearing Loop	● Videoconferencing
		Webcam	● HDMI Connectivity
		Speakerphone	● Flipchart
		Roving Mic(s)	● Tables
		Lapel Mic(s)	● Display Boards

The Exhibition Area is suitable for additional space when running an event. The space can be used for market stalls. Tables, chairs, notice boards and portable TV screens can be provided if requested upon booking.

## THE SERVERY, MRI



Capacity	N/A	Available Facilities	
Dimension	N/A	Projector	● Mixing Desk
Location	Ground Floor	TV Screen	● Presentation Clicker
		MFT PC	● Portable PA System
		PA System	● Portable TV Screen
		Hearing Loop	● Videoconferencing
		Webcam	● HDMI Connectivity
		Speakerphone	● Flipchart
		Roving Mic(s)	● Tables
		Lapel Mic(s)	● Display Boards

The Servery is suitable for additional space when running an event. The space can be used for market stalls and catering. Tables, chairs notice boards and portable TV screens can be provided if requested upon booking.



## JEFFERSON SUITE, MRI



Capacity	63	Available Facilities	
Dimension	9M x 12M	Projector	● Mixing Desk
Location	Second Floor	TV Screen	● Presentation Clicker
		MFT PC	● Portable PA System
		PA System	● Portable TV Screen
		Hearing Loop	● Videoconferencing
		Webcam	● HDMI Connectivity
		Speakerphone	● Flipchart
		Roving Mic(s)	● Tables
		Lapel Mic(s)	● Display Boards

The Jefferson Suite is ideal for medium-scale teaching sessions, practical training and boardroom meetings. The large space ideal for classroom, boardroom and cabaret seating.

## LIBRARY SEMINAR ROOM 3, MRI



Capacity	16	Available Facilities	
Dimension	5.5M x 4M	Projector	● Mixing Desk
Location	First Floor	TV Screen	● Presentation Clicker
		MFT PC	● Portable PA System
		PA System	● Portable TV Screen
		Hearing Loop	● Videoconferencing
		Webcam	● HDMI Connectivity
		Speakerphone	● Flipchart
		Roving Mic(s)	● Tables
		Lapel Mic(s)	● Display Boards

Library Seminar Room 3 is suitable for small-scale teaching, meetings and interviews.

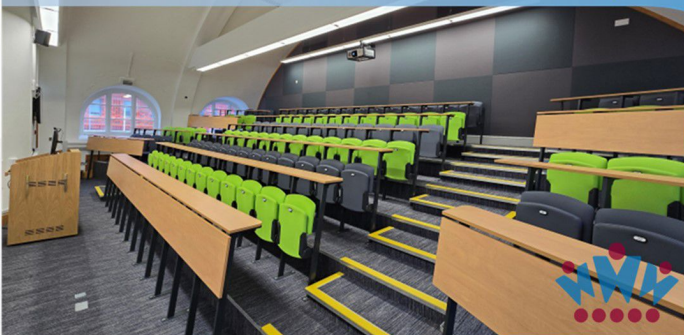
## UNDERGRADUATE LECTURE THEATRE 1, MRI



Capacity	160	Available Facilities	
Dimension	16M x 12M	Projector	● Mixing Desk
Location	Ground Floor	TV Screen	● Presentation Clicker
		MFT PC	● Portable PA System
		PA System	● Portable TV Screen
		Hearing Loop	● Videoconferencing
		Webcam	● HDMI Connectivity
		Speakerphone	● Flipchart
		Roving Mic(s)	● Tables
		Lapel Mic(s)	● Display Boards

The recently refurbished Undergraduate Lecture Theatre 1 is ideal location for hosting large events and large-scale teaching.

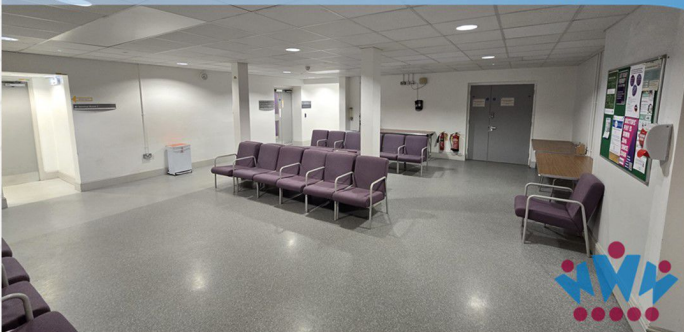
## UNDERGRADUATE LECTURE THEATRE 2, MRI



Capacity	106	Available Facilities	
Dimension	6M x 12M	Projector	● Mixing Desk
Location	First Floor	TV Screen	● Presentation Clicker
		MFT PC	● Portable PA System
		PA System	● Portable TV Screen
		Hearing Loop	● Videoconferencing
		Webcam	● HDMI Connectivity
		Speakerphone	● Flipchart
		Roving Mic(s)	● Tables
		Lapel Mic(s)	● Display Boards

The recently refurbished Undergraduate Lecture Theatre 2 is ideal location for hosting large events and large-scale teaching.

## UNDERGRADUATE BREAKOUT AREA, MRI



Capacity	N/A	Available Facilities	
Dimension	N/A	Projector	Mixing Desk
Location	Ground Floor	TV Screen	● Presentation Clicker
		MFT PC	● Portable PA System
		PA System	● Portable TV Screen
		Hearing Loop	● Videoconferencing
		Webcam	● HDMI Connectivity
		Speakerphone	● Flipchart
		Roving Mic(s)	● Tables
		Lapel Mic(s)	● Display Boards

The Undergraduate Breakout Area can be used for market stalls, registration, and catering. Tables, chairs notice boards and portable TV screens can be provided if requested upon booking.



## UNDERGRADUATE SEMINAR ROOM 1, MRI



Capacity	8	Available Facilities		
Dimension	6.5M x 6M	Projector	Mixing Desk	
Location	Ground Floor	TV Screen	● Presentation Clicker	●
		MFT PC	● Portable PA System	
		PA System	Portable TV Screen	
		Hearing Loop	Videoconferencing	
		Webcam	● HDMI Connectivity	●
		Speakerphone	● Flipchart	●
		Roving Mic(s)	Tables	●
		Lapel Mic(s)	Display Boards	

Undergraduate Seminar Room 1 is suitable for small-scale teaching, practical skills training, meetings and interviews.

## UNDERGRADUATE SEMINAR ROOM 2, MRI



Capacity	10	Available Facilities		
Dimension	5M x 4M	Projector	Mixing Desk	
Location	Ground Floor	TV Screen	● Presentation Clicker	●
		MFT PC	● Portable PA System	
		PA System	Portable TV Screen	
		Hearing Loop	Videoconferencing	
		Webcam	● HDMI Connectivity	●
		Speakerphone	● Flipchart	●
		Roving Mic(s)	Tables	●
		Lapel Mic(s)	Display Boards	

Undergraduate Seminar Room 2 is suitable for small-scale teaching, practical skills training, meetings and interviews.

## UNDERGRADUATE SEMINAR ROOM 3, MRI



Capacity	20	Available Facilities		
Dimension	6.5M x 6M	Projector	Mixing Desk	
Location	First Floor	TV Screen	● Presentation Clicker	●
		MFT PC	● Portable PA System	
		PA System	Portable TV Screen	
		Hearing Loop	Videoconferencing	
		Webcam	● HDMI Connectivity	●
		Speakerphone	● Flipchart	●
		Roving Mic(s)	Tables	●
		Lapel Mic(s)	Display Boards	

Undergraduate Seminar Room 3 is suitable for small-scale teaching, practical skills training, meetings and interviews.

## UNDERGRADUATE SEMINAR ROOM 4, MRI



Capacity	20	Available Facilities		
Dimension	6.5M x 6M	Projector	Mixing Desk	
Location	First Floor	TV Screen	● Presentation Clicker	●
		MFT PC	● Portable PA System	
		PA System	Portable TV Screen	
		Hearing Loop	Videoconferencing	
		Webcam	● HDMI Connectivity	●
		Speakerphone	● Flipchart	●
		Roving Mic(s)	Tables	●
		Lapel Mic(s)	Display Boards	

Undergraduate Seminar Room 4 is suitable for small-scale teaching, practical skills training, meetings and interviews.

## UNDERGRADUATE SEMINAR ROOM 5, MRI



Capacity	15	Available Facilities		
Dimension	5.5M x 4M	Projector	Mixing Desk	
Location	Ground Floor	TV Screen	● Presentation Clicker	●
		MFT PC	● Portable PA System	
		PA System	Portable TV Screen	
		Hearing Loop	Videoconferencing	
		Webcam	● HDMI Connectivity	●
		Speakerphone	● Flipchart	●
		Roving Mic(s)	Tables	●
		Lapel Mic(s)	Display Boards	

Undergraduate Seminar Room 5 is suitable for small-scale teaching, practical skills training, meetings and interviews. The partition between Seminar Room 5 and 6 can be opened to create a larger teaching space.



## UNDERGRADUATE SEMINAR ROOM 6, MRI



Capacity	10	Available Facilities		
Dimension	4M x 4M	Projector	Mixing Desk	
Location	Ground Floor	TV Screen	● Presentation Clicker	●
		MFT PC	● Portable PA System	
		PA System	Portable TV Screen	
		Hearing Loop	Videoconferencing	
		Webcam	● HDMI Connectivity	●
		Speakerphone	● Flipchart	●
		Roving Mic(s)	Tables	●
		Lapel Mic(s)	Display Boards	

Undergraduate Seminar Room 6 is suitable for small-scale teaching, practical skills training, meetings and interviews. The partition between Seminar Room 5 and 6 can be opened to create a larger teaching space.

## UNDERGRADUATE SEMINAR ROOM 7, MRI



Capacity	10	Available Facilities		
Dimension	4M x 4.5M	Projector	Mixing Desk	
Location	Ground Floor	TV Screen	● Presentation Clicker	●
		MFT PC	● Portable PA System	
		PA System	Portable TV Screen	
		Hearing Loop	Videoconferencing	
		Webcam	● HDMI Connectivity	●
		Speakerphone	● Flipchart	●
		Roving Mic(s)	Tables	●
		Lapel Mic(s)	Display Boards	

Undergraduate Seminar Room 7 is suitable for small-scale teaching, practical skills training, meetings and interviews. The partition between Seminar Room 7 and 8 can be opened to create a larger teaching space.

## UNDERGRADUATE SEMINAR ROOM 8, MRI



Capacity	10	Available Facilities		
Dimension	4M x 4.5M	Projector	Mixing Desk	
Location	Ground Floor	TV Screen	● Presentation Clicker	●
		MFT PC	● Portable PA System	
		PA System	Portable TV Screen	
		Hearing Loop	Videoconferencing	
		Webcam	● HDMI Connectivity	●
		Speakerphone	● Flipchart	●
		Roving Mic(s)	Tables	●
		Lapel Mic(s)	Display Boards	

Undergraduate Seminar Room 8 is suitable for small-scale teaching, practical skills training, meetings and interviews. The partition between Seminar Room 7 and 8 can be opened to create a larger teaching space.

## UNDERGRADUATE SEMINAR ROOM 9, MRI



Capacity	10	Available Facilities		
Dimension	6.5M x 3.5M	Projector	Mixing Desk	
Location	Ground Floor	TV Screen	● Presentation Clicker	●
		MFT PC	● Portable PA System	
		PA System	Portable TV Screen	
		Hearing Loop	Videoconferencing	
		Webcam	● HDMI Connectivity	●
		Speakerphone	● Flipchart	●
		Roving Mic(s)	Tables	●
		Lapel Mic(s)	Display Boards	

Undergraduate Seminar Room 9 is suitable for small-scale teaching, practical skills training, meetings and interviews. The partition between Seminar Room 9 and 10 can be opened to create a larger teaching space.

## UNDERGRADUATE SEMINAR ROOM 10, MRI



Capacity	10	Available Facilities		
Dimension	6.5M x 3.5M	Projector	Mixing Desk	
Location	Ground Floor	TV Screen	● Presentation Clicker	●
		MFT PC	● Portable PA System	
		PA System	Portable TV Screen	
		Hearing Loop	Videoconferencing	
		Webcam	● HDMI Connectivity	●
		Speakerphone	● Flipchart	●
		Roving Mic(s)	Tables	●
		Lapel Mic(s)	Display Boards	

Undergraduate Seminar Room 10 is suitable for small-scale teaching, practical skills training, meetings and interviews. The partition between Seminar Room 9 and 10 can be opened to create a larger teaching space.



## LECTURE THEATRE 1, WYTH



Capacity	168	Available Facilities		
Dimension	14M x 8.5M	Projector	● Mixing Desk	●
Location	Ground Floor	TV Screen	● Presentation Clicker	●
		MFT PC	● Portable PA System	●
		PA System	● Portable TV Screen	●
		Hearing Loop	● Videoconferencing	●
		Webcam	● HDMI Connectivity	●
		Speakerphone	● Flipchart	●
		Roving Mic(s)	● Tables	●
		Lapel Mic(s)	● Display Boards	●

Lecture Theatre 1 is in a set configuration. Atrium space can be arranged for additional room to support larger events which may have market stalls or hospitality.

## LECTURE THEATRE 2, WYTH



Capacity	100	Available Facilities		
Dimension	14M x 8.5M	Projector	● Mixing Desk	●
Location	Ground Floor	TV Screen	● Presentation Clicker	●
		MFT PC	● Portable PA System	●
		PA System	● Portable TV Screen	●
		Hearing Loop	● Videoconferencing	●
		Webcam	● HDMI Connectivity	●
		Speakerphone	● Flipchart	●
		Roving Mic(s)	● Tables	●
		Lapel Mic(s)	● Display Boards	●

Lecture Theatre 2 can be configured as a lecture room, cabaret or for practical skills training. Atrium space can be arranged for additional room to support larger events which may have market stalls or hospitality.

## SEMINAR ROOM 3, WYTH



Capacity	50	Available Facilities		
Dimension	11M x 8.5M	Projector	● Mixing Desk	●
Location	Ground Floor	TV Screen	● Presentation Clicker	●
		MFT PC	● Portable PA System	●
		PA System	● Portable TV Screen	●
		Hearing Loop	● Videoconferencing	●
		Webcam	● HDMI Connectivity	●
		Speakerphone	● Flipchart	●
		Roving Mic(s)	● Tables	●
		Lapel Mic(s)	● Display Boards	●

Seminar Room 3 has been designed with videoconferencing in mind and is the only room with a dedicated PACS machine. The room can also be used for teaching and cabaret seating events.

## SEMINAR ROOM 4, WYTH



Capacity	50	Available Facilities		
Dimension	7.5M x 11M	Projector	● Mixing Desk	●
Location	Ground Floor	TV Screen	● Presentation Clicker	●
		MFT PC	● Portable PA System	●
		PA System	● Portable TV Screen	●
		Hearing Loop	● Videoconferencing	●
		Webcam	● HDMI Connectivity	●
		Speakerphone	● Flipchart	●
		Roving Mic(s)	● Tables	●
		Lapel Mic(s)	● Display Boards	●

Seminar Room 4 is the only room that can be used for events where live tissue is required. The room can also be used for teaching and cabaret seating. Tables can be provided if requested upon booking.

## SEMINAR ROOM 5, WYTH



Capacity	15	Available Facilities		
Dimension	TBC	Projector	● Mixing Desk	●
Location	Ground Floor	TV Screen	● Presentation Clicker	●
		MFT PC	● Portable PA System	●
		PA System	● Portable TV Screen	●
		Hearing Loop	● Videoconferencing	●
		Webcam	● HDMI Connectivity	●
		Speakerphone	● Flipchart	●
		Roving Mic(s)	● Tables	●
		Lapel Mic(s)	● Display Boards	●

Seminar Room 5 is a medium size meeting room which has dedicated videoconferencing equipment. The room can also be used for small-scale teaching sessions, meetings and interviews.



## SEMINAR ROOM 6, WYTH



Capacity	15	Available Facilities		
Dimension	5.5M x 4.5M	Projector	Mixing Desk	
Location	Ground Floor	TV Screen	● Presentation Clicker	●
		MFT PC	● Portable PA System	
		PA System	Portable TV Screen	
		Hearing Loop	Videoconferencing	●
		Webcam	● HDMI Connectivity	●
		Speakerphone	● Flipchart	●
		Roving Mic(s)	Tables	●
		Lapel Mic(s)	Display Boards	

Seminar Room 6 is suitable for small-scale teaching, meetings and interviews. Tables can be provided if requested upon booking.

## SEMINAR ROOM 7, WYTH



Capacity	35	Available Facilities		
Dimension	9.5M x 8M	Projector	● Mixing Desk	
Location	Ground Floor	TV Screen	Presentation Clicker	●
		MFT PC	● Portable PA System	
		PA System	Portable TV Screen	
		Hearing Loop	Videoconferencing	
		Webcam	● HDMI Connectivity	●
		Speakerphone	● Flipchart	●
		Roving Mic(s)	Tables	
		Lapel Mic(s)	Display Boards	

Seminar Room 7 is suitable for medium-scale teaching and practical skills training. Tables can be provided if requested upon booking.

## SEMINAR ROOM 8, WYTH



Capacity	50	Available Facilities		
Dimension	9.5M x 8M	Projector	● Mixing Desk	
Location	Second Floor	TV Screen	Presentation Clicker	●
		MFT PC	● Portable PA System	
		PA System	Portable TV Screen	
		Hearing Loop	Videoconferencing	
		Webcam	● HDMI Connectivity	●
		Speakerphone	● Flipchart	●
		Roving Mic(s)	Tables	●
		Lapel Mic(s)	Display Boards	

Seminar Room 8 is suitable for medium-scale teaching and practical skills training. Additional tables can be provided if requested upon booking.

## COMMITTEE ROOM, WYTH



Capacity	20	Available Facilities		
Dimension	6.5M x 6.5M	Projector	● Mixing Desk	
Location	Ground Floor	TV Screen	Presentation Clicker	●
		MFT PC	● Portable PA System	
		PA System	Portable TV Screen	
		Hearing Loop	Videoconferencing	
		Webcam	● HDMI Connectivity	●
		Speakerphone	● Flipchart	●
		Roving Mic(s)	Tables	●
		Lapel Mic(s)	Display Boards	

The Committee Room is suitable for small-scale teaching, meetings and interviews.

## EXHIBITION AREA, WYTH



Capacity	N/A	Available Facilities		
Dimension	N/A	Projector	Mixing Desk	
Location	Ground Floor	TV Screen	Presentation Clicker	
		MFT PC	Portable PA System	
		PA System	Portable TV Screen	●
		Hearing Loop	Videoconferencing	
		Webcam	HDMI Connectivity	
		Speakerphone	Flipchart	
		Roving Mic(s)	Tables	●
		Lapel Mic(s)	Display Boards	●

The Exhibition Area is suitable for additional space when running an event. The space can be used for market stalls, registration, and catering. Tables, chairs notice boards and portable TV screens can be provided if requested upon booking.



## DISCUSSION ROOM A, WYTH



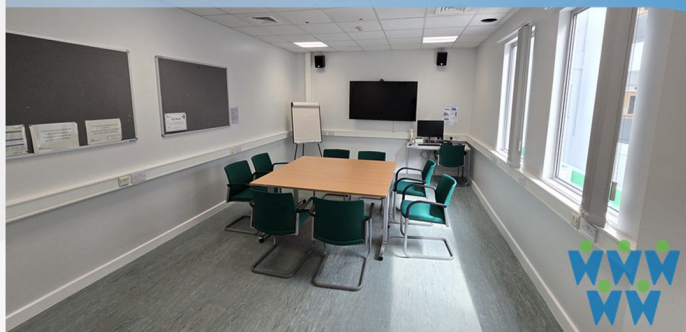
Capacity	4	Available Facilities	
Dimension	3.5M x 2.5M	Projector	Mixing Desk
Location	Ground Floor	TV Screen	● Presentation Clicker ●
Discussion Room A is suitable for meetings, interviews, small-scale teaching and practical skills training.		MFT PC	● Portable PA System ●
		PA System	Portable TV Screen
		Hearing Loop	Videoconferencing
		Webcam	● HDMI Connectivity ●
		Speakerphone	● Flipchart ●
		Roving Mic(s)	Tables ●
		Lapel Mic(s)	Display Boards ●

## DISCUSSION ROOM B, WYTH



Capacity	4	Available Facilities	
Dimension	3.5M x 2.5M	Projector	Mixing Desk
Location	Ground Floor	TV Screen	● Presentation Clicker ●
Discussion Room B is suitable for meetings, interviews, small-scale teaching and practical skills training.		MFT PC	● Portable PA System ●
		PA System	● Portable TV Screen ●
		Hearing Loop	Videoconferencing
		Webcam	● HDMI Connectivity ●
		Speakerphone	● Flipchart ●
		Roving Mic(s)	Tables ●
		Lapel Mic(s)	Display Boards ●

## CLINICAL SKILLS UNIT 1, WYTH



Capacity	20	Available Facilities	
Dimension	7M x 4M	Projector	Mixing Desk
Location	First Floor	TV Screen	● Presentation Clicker ●
Clinical Skills Unit 1 is suitable for small-scale teaching, practical skills training, meetings and interviews.		MFT PC	● Portable PA System ●
		PA System	Portable TV Screen
		Hearing Loop	Videoconferencing
		Webcam	● HDMI Connectivity ●
		Speakerphone	● Flipchart ●
		Roving Mic(s)	Tables ●
		Lapel Mic(s)	Display Boards ●

## CLINICAL SKILLS UNIT 2, WYTH



Capacity	15	Available Facilities	
Dimension	6M x 4M	Projector	Mixing Desk
Location	First Floor	TV Screen	● Presentation Clicker ●
Clinical Skills Unit 2 is suitable for small-scale teaching, practical skills training, meetings and interviews.		MFT PC	● Portable PA System ●
		PA System	Portable TV Screen
		Hearing Loop	Videoconferencing
		Webcam	● HDMI Connectivity ●
		Speakerphone	● Flipchart ●
		Roving Mic(s)	Tables ●
		Lapel Mic(s)	Display Boards ●

## CLINICAL SKILLS UNIT 3, WYTH



Capacity	15	Available Facilities	
Dimension	4.5M x 4M	Projector	Mixing Desk
Location	First Floor	TV Screen	● Presentation Clicker ●
Clinical Skills Unit 3 is suitable for small-scale teaching, practical skills training, meetings and interviews.		MFT PC	● Portable PA System ●
		PA System	Portable TV Screen
		Hearing Loop	Videoconferencing
		Webcam	● HDMI Connectivity ●
		Speakerphone	● Flipchart ●
		Roving Mic(s)	Tables ●
		Lapel Mic(s)	Display Boards ●



## CLINICAL SKILLS UNIT 4, WYTH



Capacity	10	Available Facilities		
Dimension	4.5M x 3M	Projector	Mixing Desk	
Location	First Floor	TV Screen	● Presentation Clicker	●
		MFT PC	● Portable PA System	
		PA System	Portable TV Screen	
		Hearing Loop	Videoconferencing	
		Webcam	● HDMI Connectivity	●
		Speakerphone	● Flipchart	
		Roving Mic(s)	Tables	●
		Lapel Mic(s)	Display Boards	

Clinical Skills Unit 4 is suitable for small-scale teaching, practical skills training, meetings and interviews.

## CLINICAL SKILLS UNIT 5, WYTH



Capacity	10	Available Facilities		
Dimension	4M x 4M	Projector	Mixing Desk	
Location	First Floor	TV Screen	● Presentation Clicker	●
		MFT PC	● Portable PA System	
		PA System	Portable TV Screen	
		Hearing Loop	Videoconferencing	
		Webcam	● HDMI Connectivity	●
		Speakerphone	● Flipchart	
		Roving Mic(s)	Tables	●
		Lapel Mic(s)	Display Boards	

Clinical Skills Unit 5 is suitable for small-scale teaching, practical skills training, meetings and interviews.

## UG SEMINAR ROOM 1, WYTH



Capacity	20	Available Facilities		
Dimension	9.5M x 8M	Projector	Mixing Desk	
Location	First Floor	TV Screen	● Presentation Clicker	●
		MFT PC	● Portable PA System	
		PA System	Portable TV Screen	
		Hearing Loop	Videoconferencing	
		Webcam	● HDMI Connectivity	●
		Speakerphone	● Flipchart	
		Roving Mic(s)	Tables	●
		Lapel Mic(s)	Display Boards	

Undergraduate Seminar Room 1 is suitable for medium-scale teaching, practical skills training, meetings and interviews.

## LECTURE THEATRE, NMGH



Capacity	90	Available Facilities		
Dimension	15.5M x 12M	Projector	● Mixing Desk	●
Location	Ground Floor	TV Screen	Presentation Clicker	●
		MFT PC	● Portable PA System	
		PA System	● Portable TV Screen	
		Hearing Loop	Videoconferencing	●
		Webcam	● HDMI Connectivity	●
		Speakerphone	● Flipchart	
		Roving Mic(s)	● Tables	●
		Lapel Mic(s)	Display Boards	●

The Lecture Theatre can be configured as a lecture room, with cabaret seating, market stalls or for practical skills training. This is a largest room on the North Manchester Campus.

## SEMINAR ROOM 1, NMGH



Capacity	40	Available Facilities		
Dimension	10M x 4M	Projector	Mixing Desk	
Location	First Floor	TV Screen	● Presentation Clicker	●
		MFT PC	● Portable PA System	
		PA System	Portable TV Screen	
		Hearing Loop	Videoconferencing	
		Webcam	● HDMI Connectivity	●
		Speakerphone	● Flipchart	
		Roving Mic(s)	Tables	●
		Lapel Mic(s)	Display Boards	

Seminar Room 1 is suitable for medium-scale teaching, meetings and practical skills training. Please note when planning your event that Seminar Room 1 is only accessible by stairway.



## SEMINAR ROOM 2, NMGH



Capacity	20	Available Facilities	
Dimension	6M x 4.5M	Projector	Mixing Desk
Location	First Floor	TV Screen	● Presentation Clicker ●
		MFT PC	● Portable PA System
		PA System	Portable TV Screen
		Hearing Loop	Videoconferencing ●
		Webcam	● HDMI Connectivity ●
		Speakerphone	● Flipchart ●
		Roving Mic(s)	Tables
		Lapel Mic(s)	Display Boards

Seminar Room 2 is suitable for small-scale teaching, meetings and interviews. Please note when planning your event that Seminar Room 2 is only accessible by stairway.

## SEMINAR ROOM 3, NMGH



Capacity	13	Available Facilities	
Dimension	4M x 4.5M	Projector	Mixing Desk
Location	First Floor	TV Screen	● Presentation Clicker ●
		MFT PC	● Portable PA System
		PA System	Portable TV Screen
		Hearing Loop	Videoconferencing ●
		Webcam	● HDMI Connectivity ●
		Speakerphone	● Flipchart ●
		Roving Mic(s)	Tables
		Lapel Mic(s)	Display Boards

Seminar Room 3 is suitable for small-scale teaching, meetings and interviews. Please note when planning your event that Seminar Room 3 is only accessible by stairway.

## SEMINAR ROOM 4, NMGH



Capacity	30	Available Facilities	
Dimension	6M x 6.5M	Projector	Mixing Desk
Location	Ground Floor	TV Screen	● Presentation Clicker ●
		MFT PC	● Portable PA System
		PA System	Portable TV Screen
		Hearing Loop	Videoconferencing ●
		Webcam	● HDMI Connectivity ●
		Speakerphone	● Flipchart ●
		Roving Mic(s)	Tables ●
		Lapel Mic(s)	Display Boards

Seminar Room 4 is suitable for medium-scale teaching and practical skills training. Please note that Seminar Room 4 and Seminar Room 5 have to be booked as a joint room.

## SEMINAR ROOM 5, NMGH



Capacity	17	Available Facilities	
Dimension	4M x 6.5M	Projector	Mixing Desk
Location	Ground Floor	TV Screen	● Presentation Clicker ●
		MFT PC	● Portable PA System
		PA System	Portable TV Screen
		Hearing Loop	Videoconferencing ●
		Webcam	● HDMI Connectivity ●
		Speakerphone	● Flipchart ●
		Roving Mic(s)	Tables ●
		Lapel Mic(s)	Display Boards

Seminar Room 5 is suitable for small-scale teaching and practical skills training. Please note that Seminar Room 5 and Seminar Room 4 have to be booked as a joint room.

## MEETING ROOM, NMGH



Capacity	8	Available Facilities	
Dimension	TBC	Projector	Mixing Desk
Location	Ground Floor	TV Screen	● Presentation Clicker ●
		MFT PC	● Portable PA System
		PA System	Portable TV Screen
		Hearing Loop	Videoconferencing ●
		Webcam	● HDMI Connectivity ●
		Speakerphone	● Flipchart ●
		Roving Mic(s)	Tables ●
		Lapel Mic(s)	Display Boards

The meeting room is suitable for small-scale teaching, meetings and interviews.



# Simulation and Human Factors Centre

The Simulation and Human Factors Centre at Wythenshawe Hospital is a purpose-designed facility that assists staff at Manchester University Foundation Trust by delivering a wide range of training to ultimately benefit patient care. The simulation team offers comprehensive simulation-based training, providing an immersive learning experience in a realistic environment. Training can be tailored to meet the needs of the user, with learning outcomes embedded into the simulation scenarios and a full debrief following the conclusion of each scenario.

In addition to simulation training, the centre specialises in human factors, departmental team training, first aid training, and simulator facilitator training. The Simulation Suite is equipped with two functioning ward and debrief rooms.

The Simulation and Human Factors Centre is available for private hire, including external course provision, device training facilities, and device systems testing. The simulation team will work with you to create a bespoke experience that offers an improved standard of training and leaves a lasting impression. Catering can be arranged through Sodexo, and additional rooms in the Education and Research Centre can be booked to enhance the training experience.

*Pricing is available upon request.*

## We provide the following training :-

- Simulation based education
- Team training
- Human factors
- Emergency First Aid at Work and Paediatric First Aid 2-day course
- Simulation facilitator training

## We have the following equipment :-

- Adult and paediatric simulators
- Performance coding equipment
- Immersive clinical environment
- Adult and paediatric resuscitation manikins
- Recording facilities

For further information please contact via email, phone or visit our LinkedIn

✉ [simteam@mft.nhs.uk](mailto:simteam@mft.nhs.uk)

☎ 0161 291 5930



LinkedIn



CONTROL ROOM



SIMULATION ROOM



SIMULATION ROOM



SIMULATION ROOM



DEBRIEF ROOM





# MSSSC

## MANCHESTER SURGICAL SKILLS & SIMULATION CENTRE

At the Manchester Surgical Skills and Simulation Centre (MSSSC), we're not just honing surgical skills - we're shaping the future of healthcare. From junior doctors embarking on their surgical journey to seasoned consultants seeking to refine their practice, we cater to every level through two distinct training models:

**Tailored Training Courses:** Our meticulously designed courses span the full spectrum of surgical training, from core skills development to higher structured training pathways. Immerse yourself in real-life scenarios, meticulously replicated using cutting-edge technology, and emerge with the confidence and expertise to excel in the operating theatre.

**Collaborative Knowledge Exchange:** Partnering with esteemed institutions like the Royal College of Surgeons Edinburgh and many global brands, we offer franchised training courses. This collaborative approach fosters global knowledge exchange and attracts renowned international educators, transforming the MSSSC into a vibrant hub of shared expertise.

Our success speaks volumes. In 2023/24, we saw significant growth, driven by our commitment to innovative training approaches. We influence advanced technology to create immersive experiences while encouraging a spirit of collaboration and partnership with industry leaders and academic institutions. Whether it's robotics training or pioneering surgical techniques, we constantly push the boundaries to equip healthcare professionals with the skills and confidence they need to deliver exceptional patient care.

But our journey is far from over. With exciting expansion plans in the pipeline, we're poised to welcome even more delegates and continue our quest to revolutionise surgical education on a global scale.

*Are you ready to join us in shaping the future of surgery?*

- ✓ Surgical Training Lab with 9 Surgical and Clinical Training Stations
- ✓ On-site support from Skilled Technicians and Managers
- ✓ 30 Seat Medical Seminar Room
- ✓ Group Training or Individual Bookings
- ✓ Administrative support and advice
- ✓ Audio-Visual Equipment

### Contact Us:

For more information on costs and availability of the Centre. And for general information please visit our website.

**Contact number:** 07929 868524

**Email:** [msssc@mft.nhs.uk](mailto:msssc@mft.nhs.uk)

**Website:** [www.msssc.co.uk](http://www.msssc.co.uk)

Manchester Surgical Skills and Simulation Centre, 3rd Floor,  
Stopford Building, Oxford Road, Manchester, M13 9PT



SURGICAL TRAINING LAB 1



SURGICAL TRAINING LAB 1



SEMINAR ROOM



SEMINAR ROOM