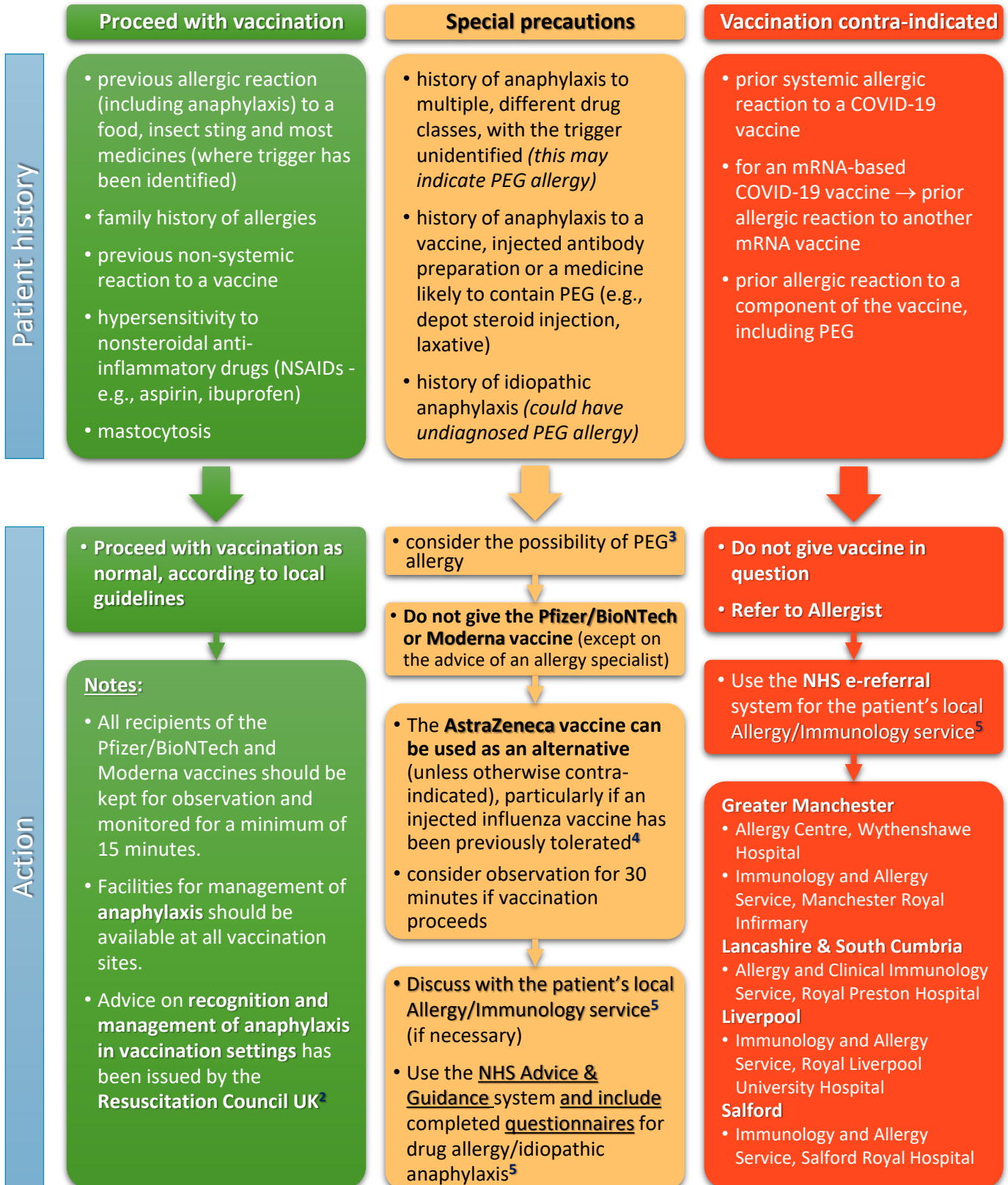


Community management of patients with a history of allergy (pre-vaccination)¹



1. <https://www.gov.uk/government/publications/covid-19-the-green-book-chapter-14a>. 12/02/2021; accessed 12/02/2021.

2. www.resus.org.uk/about-us/news-and-events/rcuk-publishes-anaphylaxis-guidance-vaccination-settings

3. PEG: polyethylene glycol or macrogol

4. The AstraZeneca vaccine contains polysorbate 80, which may cross-react with PEG, but this is believed to affect only a small proportion of patients with PEG allergy; ~70% of injected influenza vaccines given in the UK contain polysorbate 80

5. Guidance for referral/advice to all Allergy/Immunology Services in the North West of England on page 2 of this document

Community management of patients who had allergic reactions to a COVID-19 vaccine (post-vaccination)¹

Possible allergic reaction to 1st dose COVID-19 vaccine?
Did symptoms begin within 2 hours of vaccination?

Yes

Immediate-type allergic reaction

No

Delayed reaction

(e.g. urticaria/angioedema, maculo-papular rash, SCAR, vasculitis)

Systemic symptoms²
(including anaphylaxis)

Swelling or rash local
to injection site only

Reaction self-limiting
or resolved with oral
antihistamine

**Reaction required
medical attention**
(e.g. SCAR, vasculitis)

Refer to Allergist

- Use the **NHS e-referral system** for the patient's local Allergy/Immunology service⁵
- Include proforma with full details of reaction, observations and treatment given⁵

- Can have 2nd dose using the same vaccine in any vaccination setting
- **Observe for 30 minutes**

- Can have 2nd dose using the same vaccine in any vaccination setting
- Consider pre-treatment with non-sedating antihistamine 30 minutes prior to vaccination

Seek advice from Allergist

- Use the **NHS Advice & Guidance system** for the patient's local Allergy/Immunology service⁵

Guidance for referral / advice to Allergy/Immunology, proformas & questionnaires

- | | |
|---|---|
| • Allergy Centre, Wythenshawe Hospital, Manchester | https://mft.nhs.uk/wythenshaw/services/respiratory-and-allergy/allergy/ |
| • Immunology and Allergy Service, Manchester Royal Infirmary, Manchester | https://mft.nhs.uk/mri/services/clinical-immunology/ |
| • Immunology and Allergy Service, Salford Royal Hospital, Salford | https://www.srft.nhs.uk/about-us/depts/clinimm/ |
| • Allergy and Clinical Immunology Service, Royal Preston Hospital, Preston | https://www.lancsteachinghospitals.nhs.uk/allergy-clinical-immunology- |
| • Immunology and Allergy Service, Royal Liverpool University Hospital, Liverpool | https://www.rlbuh.nhs.uk/departments/medical-specialisms/infection-and-immunology/clinical-immunology/ |

1. <https://www.gov.uk/government/publications/covid-19-the-green-book-chapter-14a>. 12/02/2021; accessed 12/02/2021.

2. www.resus.org.uk/about-us/news-and-events/rcuk-publishes-anaphylaxis-guidance-vaccination-settings

3. PEG: polyethylene glycol or macrogol

4. The AstraZeneca vaccine contains polysorbate 80, which may cross-react with PEG, but this is believed to affect only a small proportion of patients with PEG allergy; ~70% of injected influenza vaccines given in the UK contain polysorbate 80

5. Guidance for referral/advice to all Allergy/Immunology Services in the North West of England on page 2 of this document