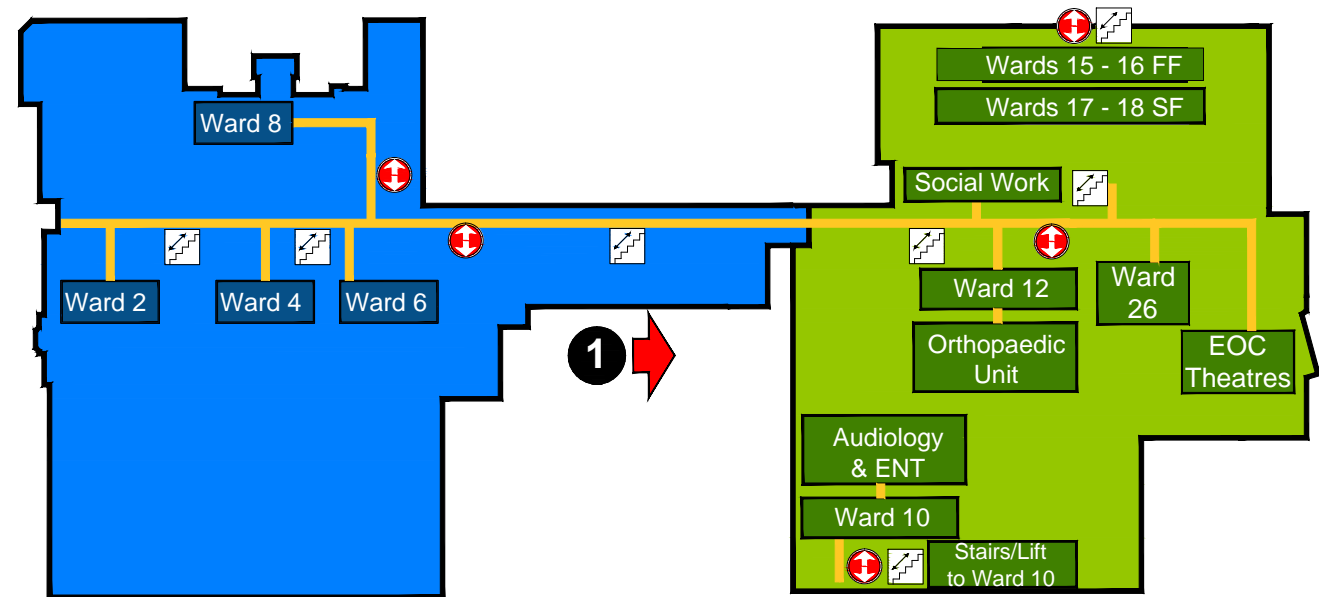


GROUND FLOOR LAYOUT



FIRST FLOOR LAYOUT

KEY

- Hospital entrances
- Entrance Reference
- Information Desk / Main Reception
- Car Parks
Parking at this hospital is **FREE**.
If you need to stay more than 3 hours then please register at any of the following.
 - Main Information Desk
 - Emergency Dept. Reception
 - Car park office near Entrance
- Bus Stop
- Corridor within main hospital
- Entrances to other buildings
- Coffee Lounge & Restaurant
- Tea Bars
in Ante-Natal and in Outpatients
(limited opening hours)
- Shop
At Information Desk / Main Reception
- Lift
- Stairs

* = External Building GF = Ground Floor FF = First Floor SF = Second Floor

Department	Location	Department	Location	Department	Location
(A&E) Emergency Department	Red Zone , GF	Education Centre & Library*	Blue Zone , GF	Physiotherapy	Green Zone,GF
Ante-Natal Clinic	Red Zone , GF	Endoscopy Suite	Red Zone , GF	Pharmacy	Red Zone , GF
Appliances (Orthopaedic Centre)	Green Zone,GF	Estates Office (Nurses Home)*	Blue Zone , GF	Phlebotomy (Blood tests)	Green Zone,GF
Audiology Department (Ward 10)	Green Zone,FF	General Office	Blue Zone , GF	Radiology (X-Ray)	Red Zone , GF
Bereavement Centre*	Blue Zone	Gynaecology Assessment Clinic (Ante-Natal)	Red Zone , GF	Restaurant & Coffee Lounge	Blue Zone , GF
Blood Test (Phlebotomy)	Green Zone,GF	Gynaecology Ward (Ward 11)	Green Zone,GF	Rheumatology (Ward 1)	Blue Zone , GF
Boardroom	Blue Zone , GF	High Dependency Unit (Ward 9)	Green Zone,GF	Seymour Unit (Ward 3)	Blue Zone , GF
Cardio-Respiratory Unit	Blue Zone , GF	Intensive Care Unit (Ward 9)	Green Zone,GF	Seymour Outpatients	Blue Zone , GF
Childrens Resource Centre	Green Zone,GF	Medical Assessment Unit	Blue Zone , GF	Sexual Health	Red Zone , GF
Chapel St.Luke's & Prayer Room	Blue Zone , GF	Medical Assessment Unit	Red Zone , GF	Speech Therapy (Physiotherapy)	Green Zone,GF
Colposcopy (Ante Natal)	Red Zone , GF	Neurology Rehabilitation (Ward 1)	Blue Zone , GF	Social Work Department	Green Zone,FF
Contraception (Sexual Health)	Red Zone , GF	Nurses Home*	Blue Zone , GF	Surgical Unit (Ward 11)	Green Zone,GF
Coronary Care Unit (Ward 2)	Blue Zone , FF	Orthopaedic Centre	Green Zone,GF	Trafford Health Centre (Walk-in Centre)	Red Zone , GF
Day Surgery Unit (Ward 7)	Blue Zone , GF	Orthopaedic Unit (Ward 12)	Green Zone,FF	Ultrasound Scan (Radiology)	Red Zone , GF
Diabetes Centre (near Entrance 2)*	Blue Zone	Outpatients	Red Zone , GF	Urology Department	Red Zone , GF
Divisional Management	Blue Zone	Pals & Patient Advice & Liaison Service (Outpatients)	Green Zone	Wards 15, 16	Green Zone,FF
Ear Nose & Throat ENT (Ward 10)	Green Zone,FF	Pathology Laboratory	Blue Zone , GF	Wards 17, 18	Green Zone,SF